

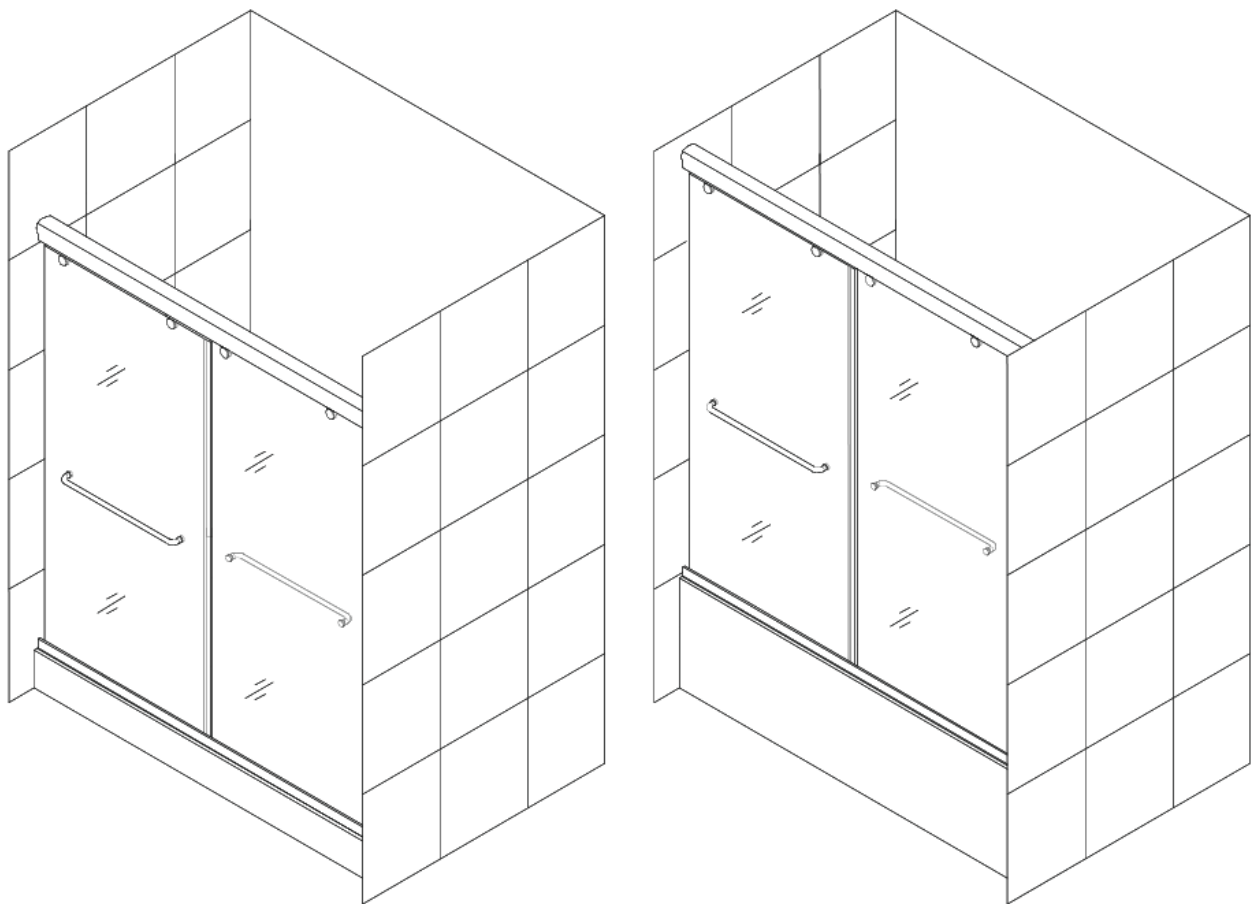


## model: CHARISMA

### SHOWER/TUB DOOR INSTALLATION INSTRUCTIONS

#### IMPORTANT

DreamLine™ reserves the right to alter, modify or redesign products at any time without prior notice. For the latest up-to-date technical drawings, manuals or any other details please refer to your model's web page on [BathAuthority.com](http://BathAuthority.com)



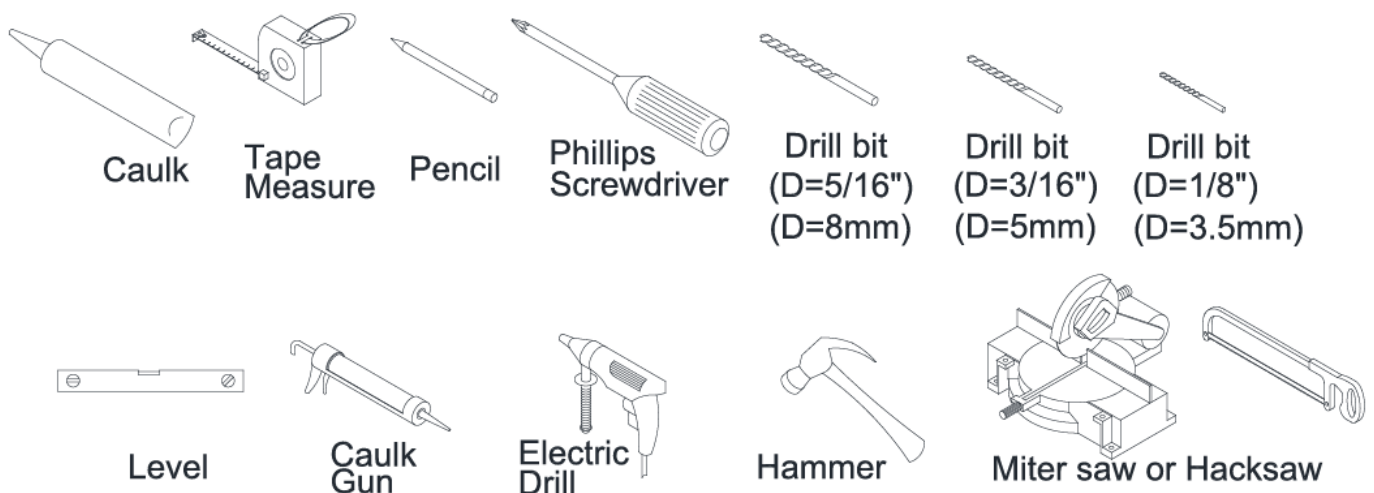
Please read these instructions carefully before installing. If you have any questions regarding installation, please call our technical support specialists Monday through Friday 8:00 AM – 7:00 PM EST at Phone: [1-866-731-2244](tel:1-866-731-2244), Fax: [1-866-857-3638](tel:1-866-857-3638) or e-mail our technical support group at [support@BathAuthority.com](mailto:support@BathAuthority.com).

For more information on [DreamLine Shower Doors](http://www.BathAuthority.com) and [Tub Doors](http://www.BathAuthority.com) please visit [www.BathAuthority.com](http://www.BathAuthority.com)

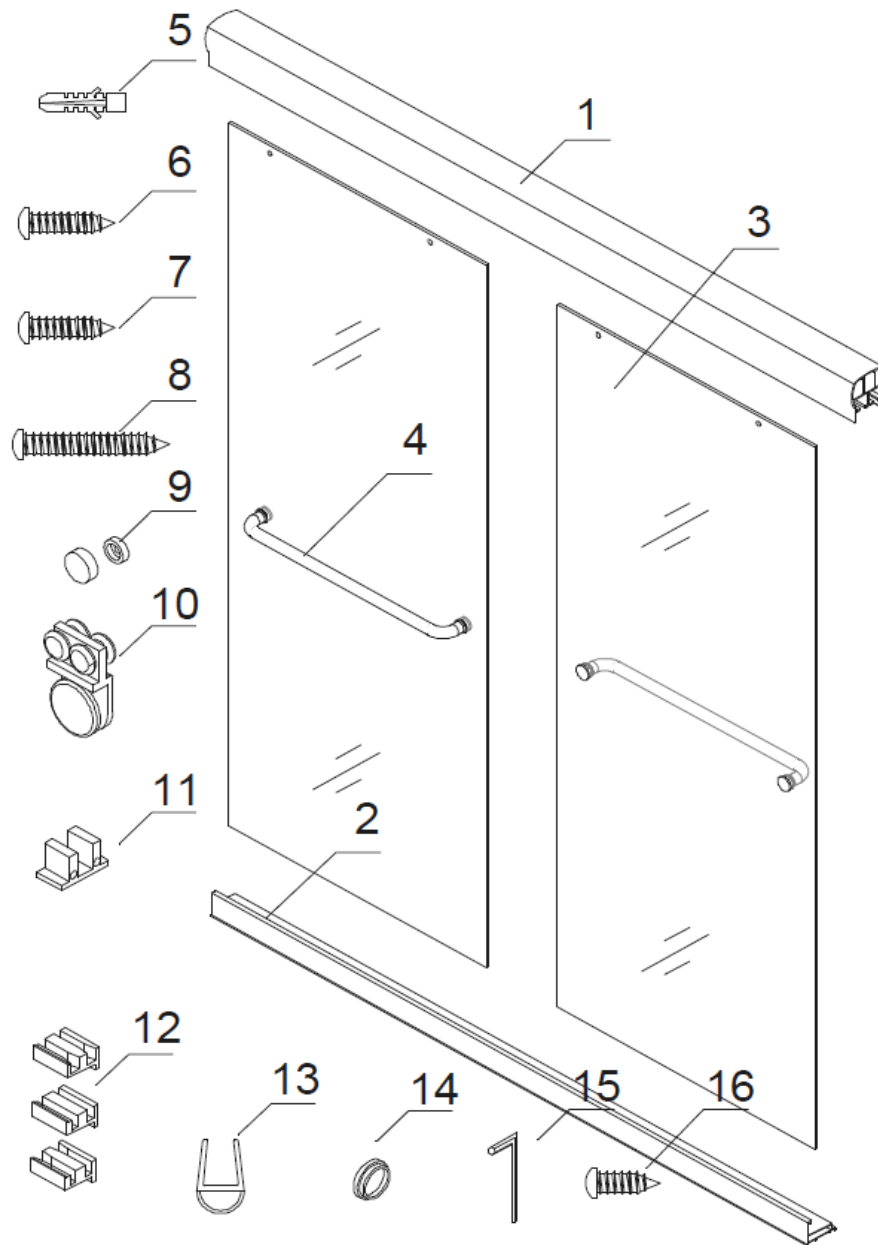
## Preparation

1. After opening all boxes and packages, read this introduction carefully. Check that all of the needed parts are included in the package by marking all the components on the "Detailed Diagram of Shower/Tub Door Components". Examine boxes and packages for shipping damage. If the unit has been damaged, has a finishing defect, or has missing parts, please contact our customer support department within 3 business days of the delivery date. Please note that **DreamLine™ will not replace any damaged products or missing parts free of charge after 3 business days or if the product has been installed.** Feel free to contact DreamLine™ if you have any questions.
2. **Please note that you should consult your local building codes with questions on installation compliance standards. Building and plumbing codes may vary by location, and DreamLine™ is not responsible for code compliance standards for your project and will not accept any returns.**
3. Prior to the installation, please confirm that the surface is level and solid and will be able to support the total weight of the unit. Also make sure that the walls are plumb. Please, note that some adjustments, cutting and drilling might be necessary during the installation process. **Please protect all primary surfaces of the product during installation.**
4. **Never set your glass down directly onto a tile floor.** Always use a piece of wood or cardboard to protect the bottom edge and corners of the glass.
5. **Please NOTE! This door does not have out-of-plumb adjustment. Make sure your walls are plumb, your sill is level, and that your finished opening width is between 56" and 60"**

## Tools Required



## Detailed Diagram of Shower/Tub Door Components



### Packing List

01	Guide rail	1pc	09	Decorative cover for Guide block	6pcs
02	Threshold	1pc	10	Roller assembly	4pcs
03	Glass door	2pcs	11	Guide rail bracket	2pcs
04	Towel Bar	2pcs	12	Guide block (left, right, middle)	1set
05	Wall anchor	4pcs	13	Bumper strips	4pcs
06	Round head screw ST4.2×16	6pcs	14	Decorative cover for Threshold	2pcs
07	Round head screw ST4.2×25	2pcs	15	3mm hex wrench	1pc
08	Round head screw ST4.2×40	4pcs	16	Round head screw ST4.2×10	2pcs

**NOTE:** Carefully unpack your unit and inspect it. Lay it out and identify all of the parts using the detailed diagram above and packing list in your manual as a reference. Before discarding the carton, check for any small hardware bags that may have fallen to the bottom of the box. If any parts are damaged or missing, please contact DreamLine™ for replacement.

**NOTE:** Retain these installation instructions for future reference.

## Shower/Tub Door Installation

1. Measure your finished opening width at the top, middle and bottom of your finished opening. This distance is marked as “W”.

See Fig. 1 for details.

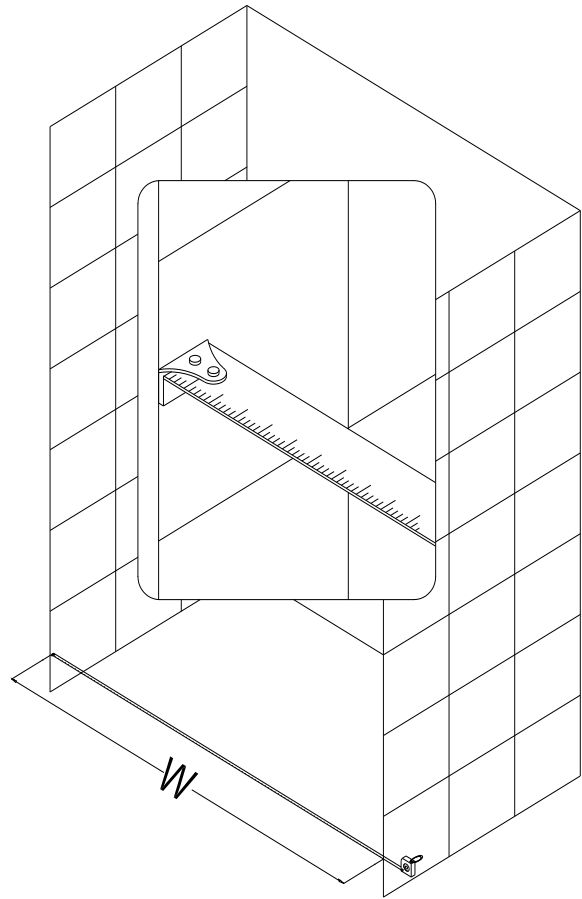


Fig. 1

2. The **Guide rail (01)** and the **Threshold (02)** have been precut for your **model size** width of **60"**.

If your finished opening width is less than 60", you will need to cut the **Guide rail (01)** and the **Threshold (02)** to “W” (W = finished opening - 1/16”).

>The **Guide rail (01)** can be cut from either end. (Fig. 2)

>The **Threshold (02)** must be cut **equally from both ends**. (Fig 3) so that the center guide holes stay centered.

You can use a chop saw if available or a hack saw. File down any burrs that occur to prevent scratches to the wall.

**NOTE: This unit does not allow for out-of-plumb wall conditions.**

See Fig. 2 and Fig. 3 for details.

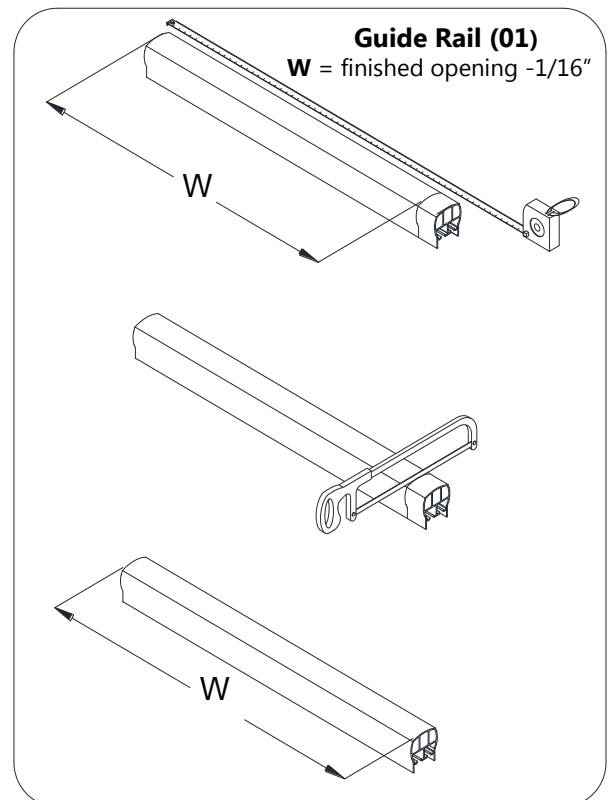


Fig. 2

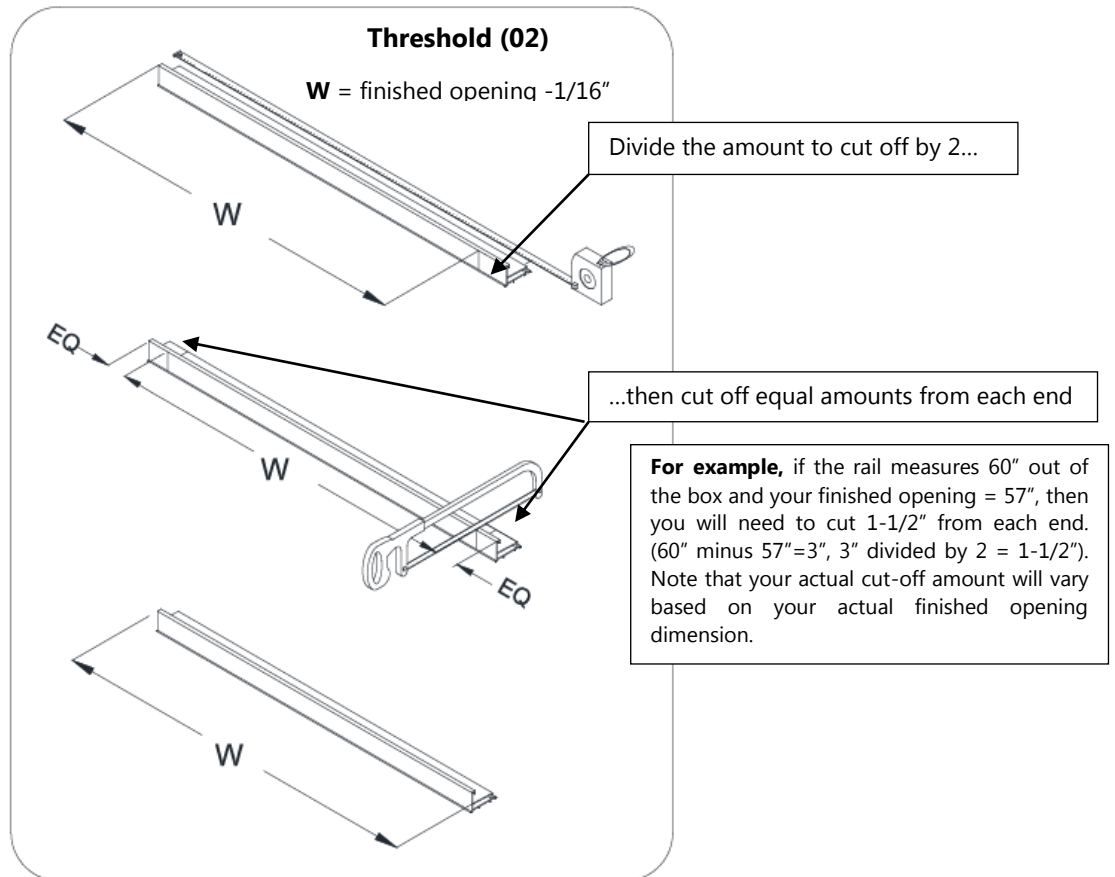


Fig. 3

- After you have cut off equal amounts from each end of the **Threshold (02)**, you will need to drill new holes to attach the threshold to your sill or tub deck. Measure **1-1/2"** in from both ends of the **Threshold (02)** .(Fig 4.1)

Drill through both layers of aluminum using a **Ø3/16"** drill bit (Fig. 4.2), and then enlarge the hole of the first layer with a **Ø5/16"** drill bit (Fig. 4.3). (the 3/16" hole will be used for the attachment screw and the 5/16" hole is used for the decorative cap).

See Fig. 4 for details.

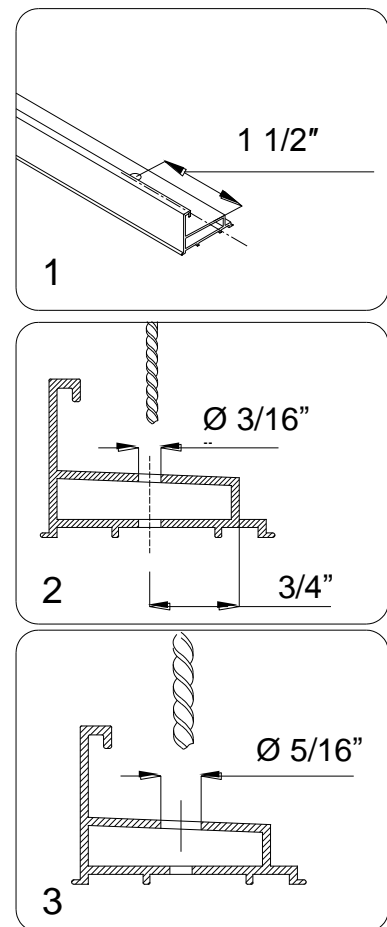


Fig. 4

4. Place the **Threshold (02)** in the desired position and parallel to the front edge of the Shower base or the Tub.  
 Measure the distance from the front edge of the **Threshold (02)** to the finished corner of the wall. This distance is "**X**". (you will need this distance for Step 6) Mark the drill holes through the predrilled holes at both ends of the **Threshold (02)**.

See Fig. 5 for details.

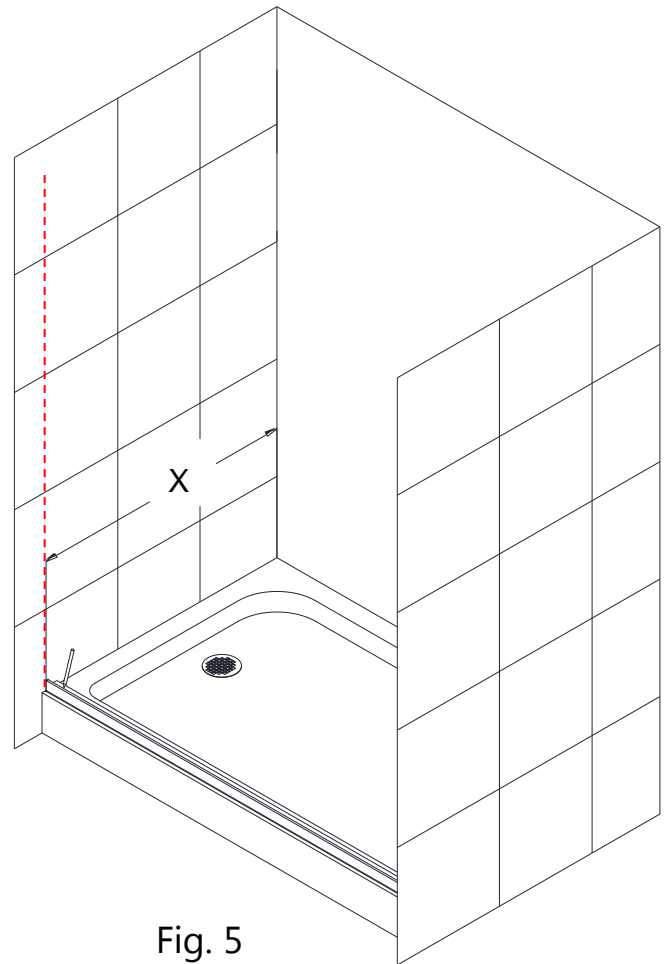


Fig. 5

5. Drill the holes into the Shower base or the Tub using an  $\text{Ø } 1/8''$  drill bit. Apply a layer of caulk or silicone to the bottom side of the **Threshold (02)** and secure it to the Shower base with the **Round head screw ST4.2×25 (07)**.  
 Cover the screw holes with the **Decorative covers for Threshold (15)**.

See Fig. 6 for details.

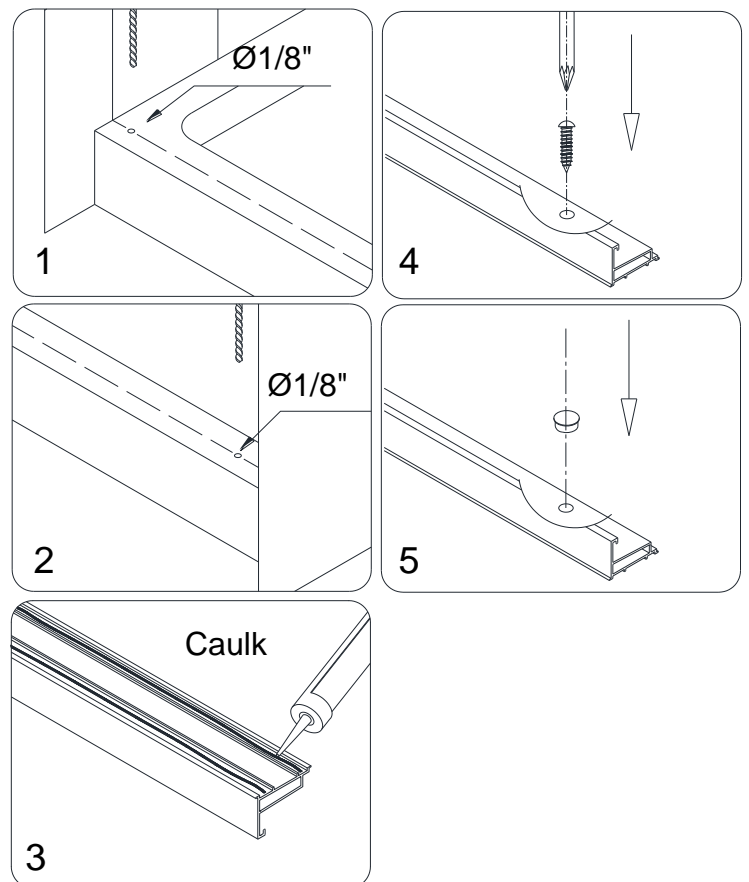


Fig. 6

## Height of the Guide Rail Bracket for Shower Door

6. Place your **Guide Rail Bracket (11)** at a height of **74"** from the base (see table below) and at dimension "**X**" from the back wall (from Step 4).

Align the front bottom corner of the **Guide Rail Bracket (11)** with the outside of the **Threshold (02)** to mark the wall for drilling.

Be sure to keep the **Guide Rail Brackets** level.

See Fig. 7 for details.

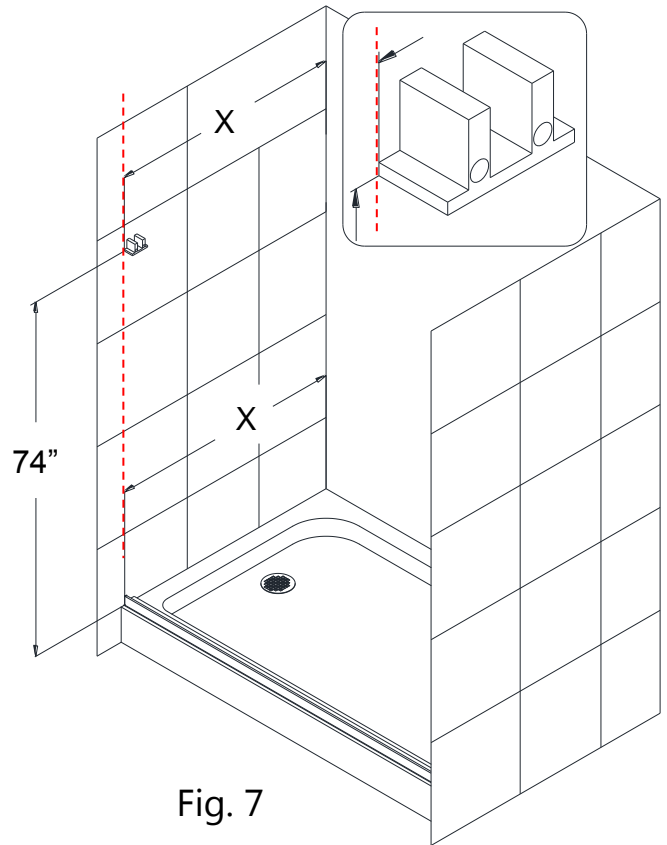


Fig. 7

## Height of the Guide Rail Bracket for Tub door.

7. Place your **Guide Rail Bracket (11)** at a height of **55-3/16"** from the base and at dimension "**X**" from the back wall (from Step 4).

Align the front bottom corner of the **Guide Rail Bracket (11)** with the outside of the **Threshold (02)** to mark the wall for drilling.

**Note:** Be sure to keep the **Guide Rail Brackets** level.

See Fig. 8 for details.

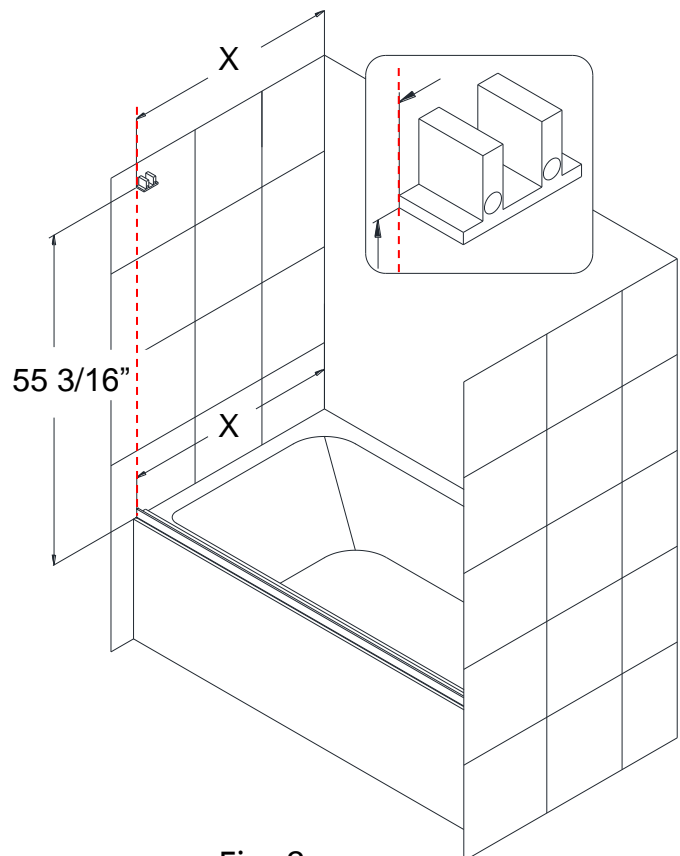


Fig. 8

8. Mark the drill holes on the wall using the **Guide rail bracket (11)**.  
 Drill the holes using a  $\text{Ø } 5/16''$  drill bit, insert the **Wall anchors (05)** and secure the **Guide rail bracket (11)** to the wall with the Round head screw **ST4.2×40 (08)**.

See Fig. 9 for details.

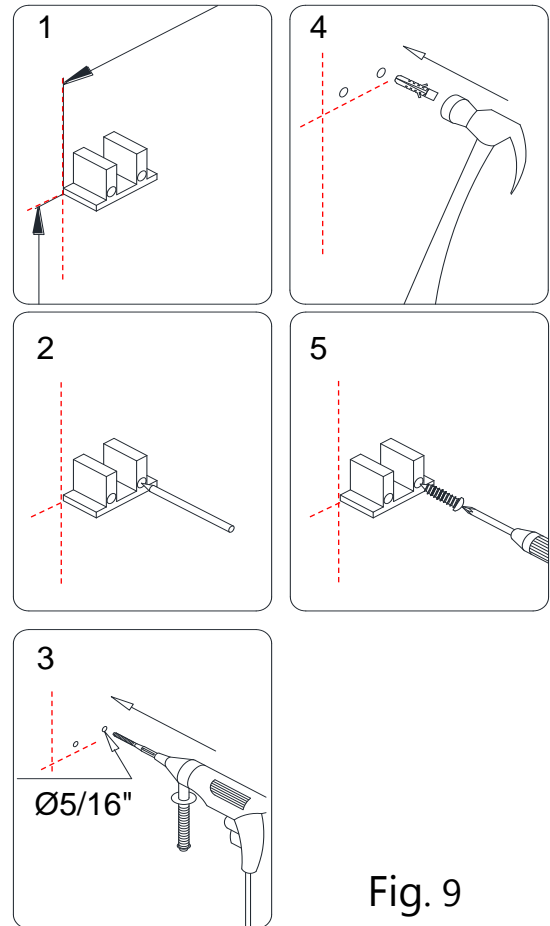


Fig. 9

9. Repeat Step 6 / Step 7 and Step 8 to mount the second **Guide rail bracket (11)** to the opposite wall.

See Fig. 10 for details.

**Note:** The **Guide Rail (01)** must be installed *level* and parallel to the **Threshold (02)** to ensure proper operation the unit.

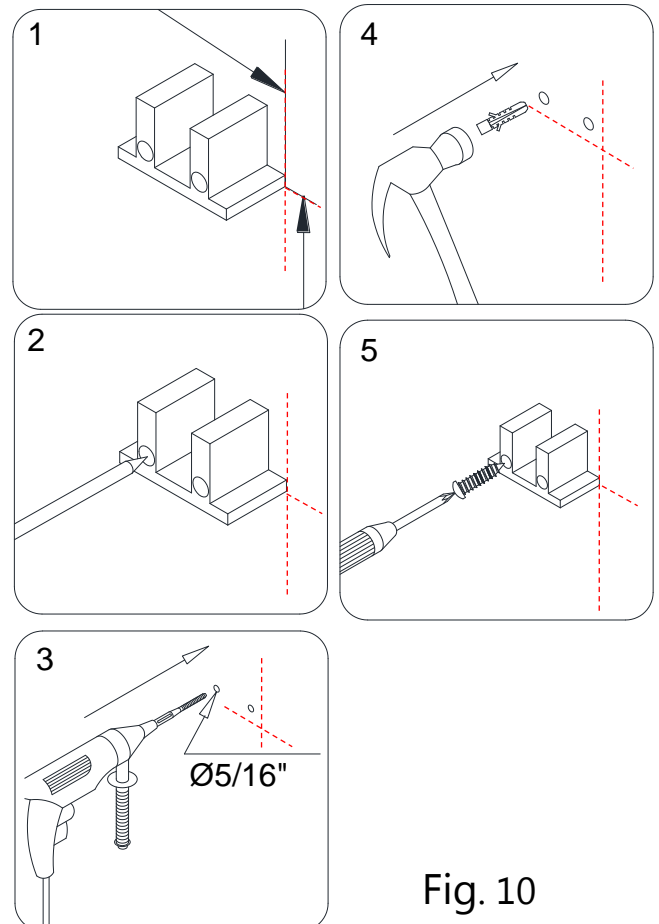


Fig. 10

10. Bring the **Guide rail (01)** over the top of the **Guide rail brackets (11)** and lock them together. Mark the drill holes in the **Guide rail (01)** through the hole in the middle of the bracket. Remove the **Guide rail (01)** and drill the holes using an **Ø 1/8"** drill bit. Slide the **Roller assemblies (10)** into the channel of the **Guide rail (01)**. (Two rollers in each slot).

**NOTE:**

Pay attention to the direction of the **Roller assemblies** (They all need to face the same direction as shown in Figure 10, images 5-6)

Place the **Guide rail (01)** back into position and fasten the **Guide rail (01)** to the **Guide rail bracket (11)** with the **Round head screw ST4.2×10 (16)**.

See Fig. 11 and Fig. 12 for details.

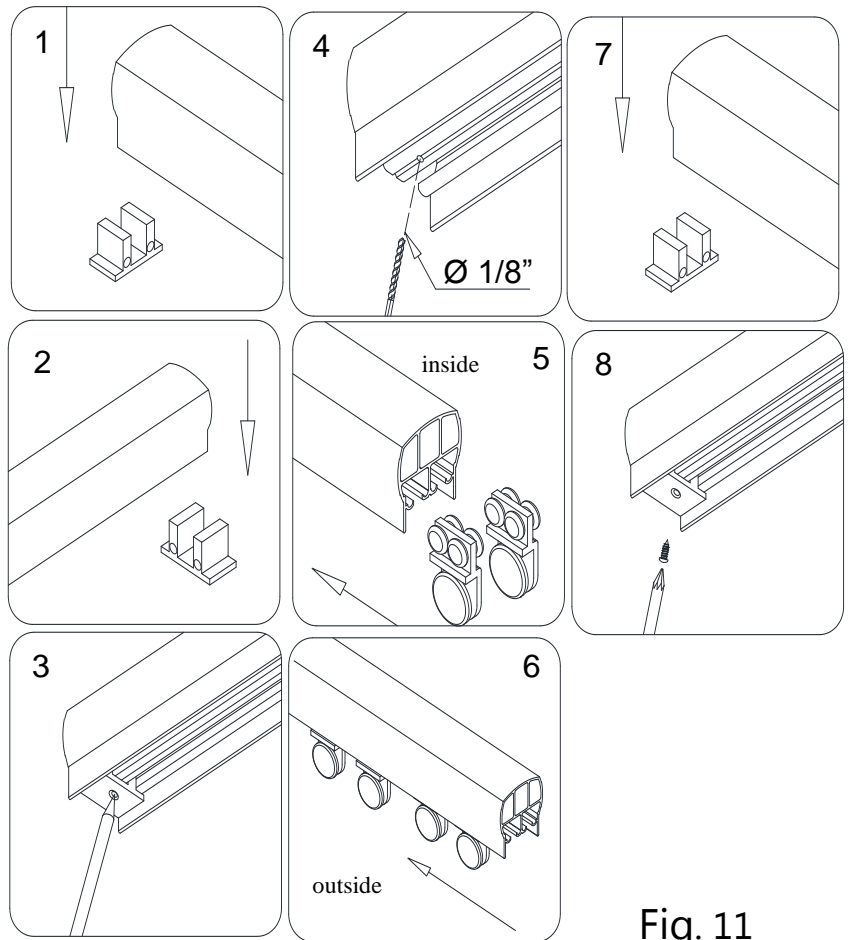


Fig. 11

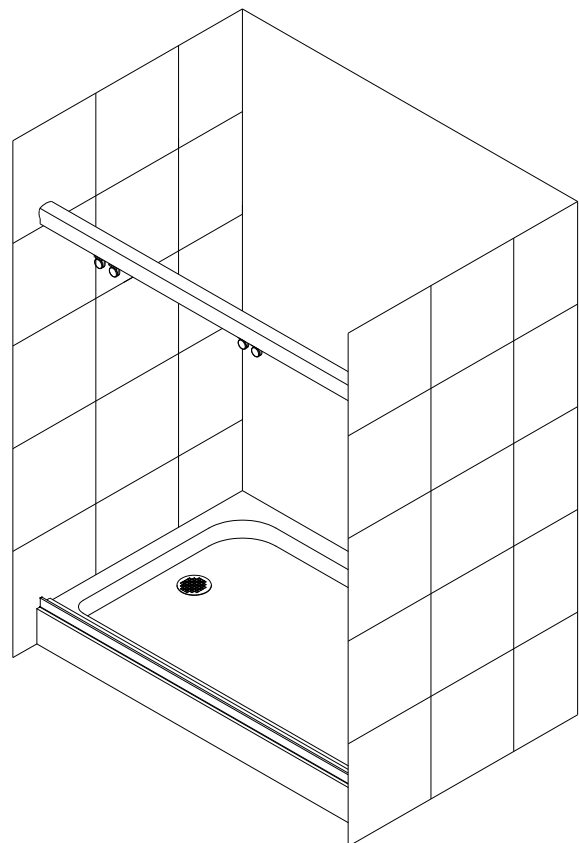


Fig. 12  
I

11. Secure the **Glass doors (03)** onto the **Roller assemblies (10)** and fasten them with the provided bolts. Attach the **Towel Bars (04)** onto the **Glass doors**.  
**Note:** DO NOT use the Towel Bars to lift the glass!

See Fig. 13 and Fig. 14 for details.

**NOTE:** Rotating the glass holder outer disks: The disk bolt is positioned off-center by 1/8" to provide for some minor adjustments to the door glass to achieve a better seal with the wall. You will need an assistant to support the weight of the glass while you loosen the bolt, rotate the disk and retighten the bolt.

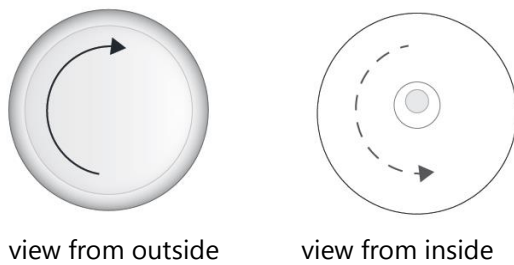
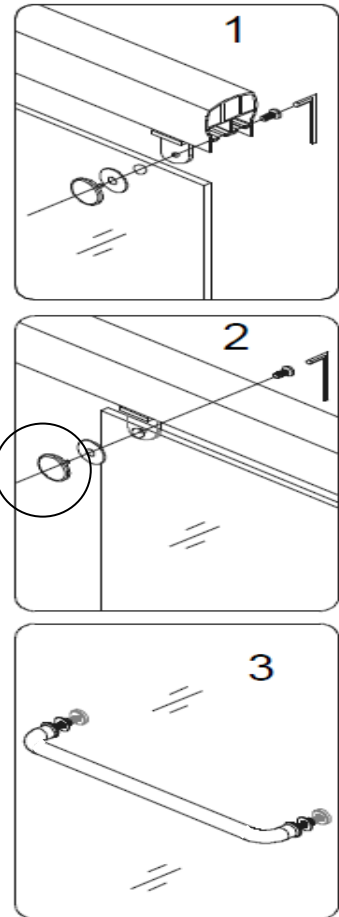


Fig. 13



**NOTICE:**

On the outside **Glass door**, the **Towel Bar** must be installed outwards.  
 On the inside **Glass door**, the **Towel Bar** must be installed inwards. See Fig. 14

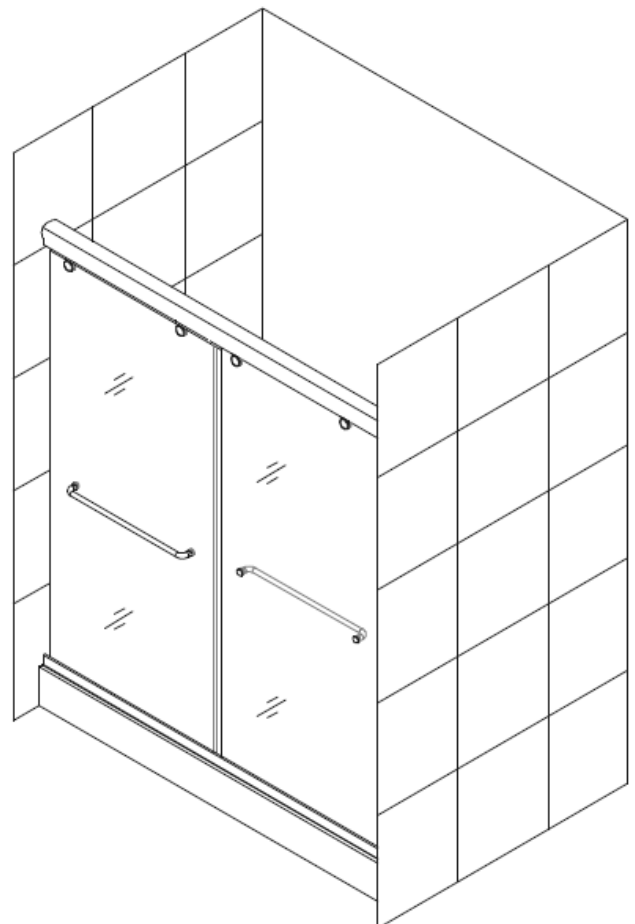


Fig. 14

12. Slide the **Glass doors (03)** to the right side and secure the **Left Guide block (13)** to the left end of the **Threshold (02)**.

Drill the holes into the **Threshold** through predrilled holes in the **Guide block** and fasten the **Guide Block** with the **Round head screw ST4.2×16 (06)**.

Slide the **Middle Guide block (13)** off the left edge of the **Glass doors** and secure it to the center of the **Threshold**. Drill the holes into the **Threshold** using  $\text{Ø } 1/8''$  drill bit and fasten the **Guide block** to it using **Round head screw ST4.2×16 (06)**.

Now slide the two doors to the left side and install the **Right Guide block (13)** to the right end of the **Threshold**.

Cover the screws with the **Decorative covers for Guide block (09)**.

See Fig. 15.1, Fig. 15.2 and Fig. 15.3 for details.

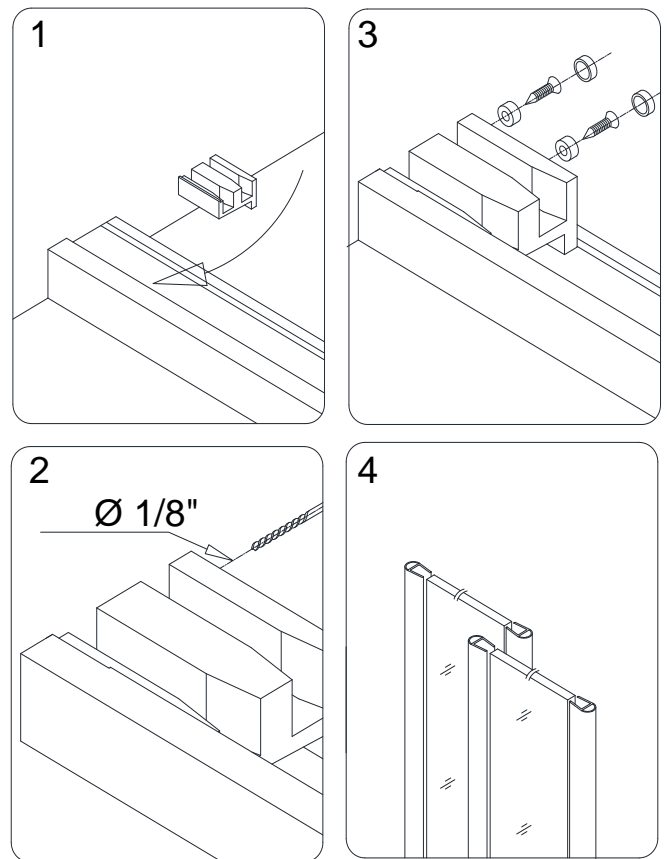


Fig. 15

13. Press the **Bumper strips (14)** on the vertical edges of the **Glass doors (03)**.

See Fig. 15.4 for details.

14. Apply sealant along the connection of the **Guide rail (01)** and the Shower base.

See Fig. 16 and Fig. 17 for details.

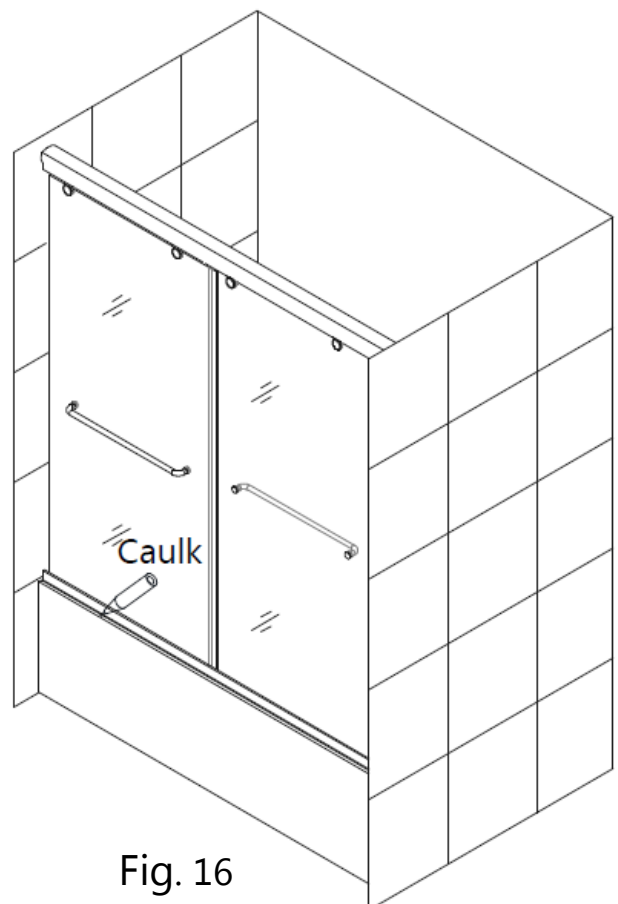


Fig. 16

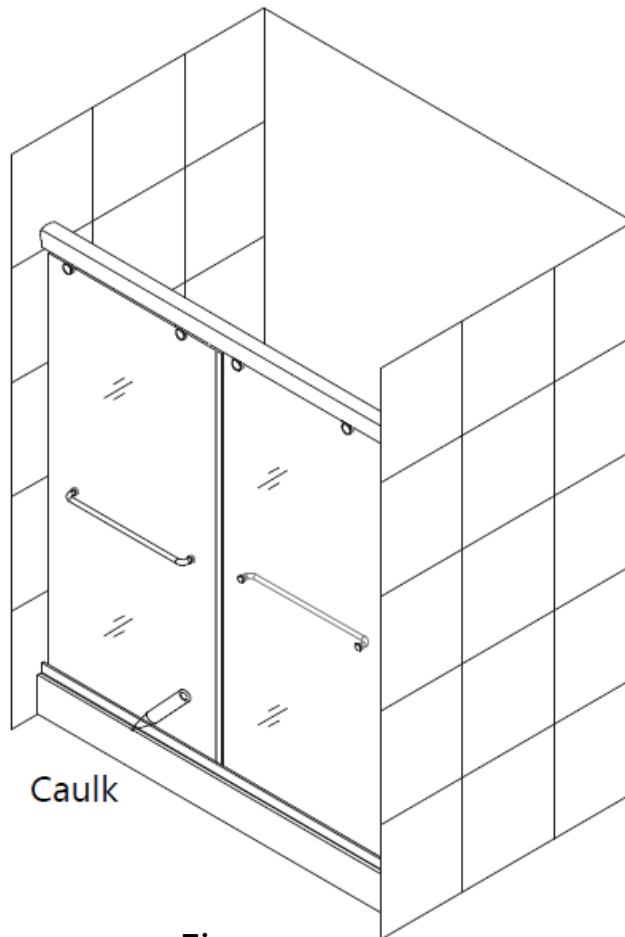


Fig. 17

## **Product Maintenance**

**BASES and BACKWALLS:** To ensure long lasting life for your acrylic back walls: wipe them off after each use with a soft cloth. To clean the acrylic back walls use non-abrasive sprays or cream based cleaners. Never use abrasive cleansers, metal brushes or scrapers that could scratch or dull the surface.

**GLASS:** To ensure long lasting life for your glass shower products: wipe them off after each use with a soft cloth. Rinse and wipe off the glass using either a soft cloth or a squeegee to prevent soap buildup and water spots. Never use abrasive cleaners and cleaning products that contain scouring agents to prevent scratching the surface. Never use bristle brushes or abrasive sponges.

**HARDWARE:** To ensure a long lasting finish: wipe off the metal parts after each use with a soft cloth. Do not use abrasive cleaners or cleaning products containing ammonia, bleach or acid. If accidentally used, rinse the surface as soon as possible to prevent finish peeling or corrosion. After cleaning the shiny finishes, rinse thoroughly and wipe dry with soft cloth. Clean stainless steel surfaces at least once a week. When applying stainless steel cleaner or polish, work with (not across) the grain. Never use abrasive sponge or cloth, steel wool or wired brushes.

## DREAMLINE™ EXCLUSIVE LIMITED WARRANTY AS OF MAY 6, 2013

This warranty extends only to the original owner/end-user for household use only and is not transferable to a subsequent owner. This warranty extends for a designated period of time, so long as it remains in use in its original place of installation. This warranty applies only to DreamLine products purchased from an authorized dealer in United States or Canada. Proof of purchase (original sales receipt) from the original consumer purchase must be provided with all warranty claims.

**IN NO EVENT SHALL THE LIABILITY OF DREAMLINE EXCEED THE PURCHASE PRICE OF THE UNIT.**

DreamLine products must be installed by a fully insured and licensed professional. Installation of DreamLine product by anyone other than fully insured licensed professionals shall **VOID THE WARRANTY**. DreamLine recommends that such licensed professionals have experience in the installation of bathroom products. Installation of certain products, including, without limitation, glass products (i.e., shower and tub doors) by an inexperienced installer may result in glass breakage and, consequently, cause personal injury or death.

### PARTS ONLY WARRANTY

This warranty is extensive in that it covers replacement of all defects. LABOR CHARGES AND/OR DAMAGE INCURRED IN INSTALLATION, REPAIR, OR REPLACEMENT, AS WELL AS ANY OTHER KIND OF LOSS OR DAMAGE ARE EXCLUDED

### COMMERCIAL USE AND OTHER EXCLUSIONS

This warranty excludes all industrial, commercial and business usage, whose purchasers are hereby extended a one (1) year limited warranty from the date of purchase for shower and tub doors; a three (3) month limited warranty from the date of purchase for vanities and sinks, with all other terms of this warranty applying except the duration of the warranty.

DREAMLINE JETTED AND STEAM SHOWER CABINS, DREAMLINE SHOWER COLUMNS AND DREAMLINE SHOWER SEATS ARE NOT INTENDED FOR COMMERCIAL USE AND THERE IS NO WARRANTY EXTENDED FOR THESE PRODUCTS FOR COMMERCIAL USE.

DreamLine hereby disclaims all warranties for products sold as dealer or store displays. DreamLine hereby disclaims all warranties for products used outside of the United States or Canada whether expressed or implied, including but not limited to the implied warranties of merchantability and fitness for a particular purpose.

### WARRANTY TERMS

DreamLine will, at its election, repair or replace the product found by DreamLine in its sole judgment, to be defective within the warranty period under normal residential use and maintenance. The replacement of a product is limited to supplying a replacement product or part (same as existing or if not available, comparable product). DreamLine warranty obligation shall be discharged upon tender of parts, replacement or repair of the product. Purchaser's refusal to accept the tender terminates all warranty obligations and **VOIDS THE WARRANTY**. Cost of freight for returning products to DreamLine for repairs or replacement under this limited warranty are the responsibility of the customer. Cost of freight associated with shipping of replacement product or parts to the customer may be charged to customer. Any product replaced or repaired during the warranty period will be covered only for the remaining period of the original warranty. In no event will DreamLine be liable for costs of repair or replacement of any installation material, including but not limited to tiles, marble, etc.

**DREAMLINE IS NOT RESPONSIBLE FOR INSTALLATION, REMOVAL OR REINSTALLATION COSTS OF ANY PRODUCT REQUIRING WARRANTY SERVICES.**

Any modification or alteration of any DreamLine products will void the warranty. DreamLine product installations and repairs must be performed by either a DreamLine authorized agent or a licensed, insured and experienced professional contractor - installation or repairs performed by any other party shall void the warranty. This warranty shall not apply to breakage or damages caused by normal wear and tear, fault, carelessness, abuse, misuse, misapplication, improper maintenance, alteration or modification of the unit, as well as chemical or natural corrosion, accident, fire, flood, act of God or any other casualty. Improper care and cleaning will void the warranty. Use of cleaners containing abrasive cleansers, ammonia, bleach, acids, waxes, alcohol, solvents or other products not recommended for chrome or similar finish, glass or acrylic will void the warranty. For additional product maintenance instructions please refer to product installation manual. DreamLine is not responsible for any issues arising in connection with errors or omissions in information provided on DreamLine's websites. The warranty does not extend to any non-DreamLine plumbing or components installed by installers, end users or by any party other than DreamLine.

**THE FOREGOING WARRANTIES ARE IN LIEU OF ALL OTHER WARRANTIES, EXPRESSED OR IMPLIED, INCLUDING BUT NOT LIMITED TO THE IMPLIED WARRANTIES OF MERCHANTABILITY AND FITNESS FOR A PARTICULAR PURPOSE. BATH AUTHORITY LLC ("DREAMLINE") AND/OR SELLER DISCLAIMS ALL LIABILITY FOR SPECIAL, INCIDENTAL OR CONSEQUENTIAL DAMAGES. DREAMLINE IS NOT LIABLE FOR PERSONAL INJURIES OR DEATH TO ANY PERSON OR FOR ANY DIRECT, SPECIAL, INCIDENTAL OR CONSEQUENTIAL DAMAGE, LOSS OF USE, LOSS OF TIME, LOSS OF PROFITS, INCONVENIENCE, INCIDENTAL EXPENSES, LABOR OR MATERIAL CHARGES, OR ANY OTHER COSTS RESULTING FROM THE USE OF ITS PRODUCTS OR PERTAINING TO THE APPLICATION OF THE PRESENT WARRANTY, OR RESULTING FROM THE REMOVAL OR REPLACEMENT OF ANY PRODUCT OR ELEMENT OR PART COVERED BY THIS WARRANTY.**

### PRODUCT WARRANTY PERIODS

DreamLine is not responsible for product code compliance or for verifying building code restrictions on installation or use and any such compliance is excluded from this warranty. DreamLine reserves the right to modify this warranty at any time - such warranty modifications will not alter the warranty applicable at the time of sale of the products in question. The warranty terms for specific products for consumer (non-industrial, non-commercial, non-business use only) are:

#### SHOWER BACKWALL, SHOWER CABINS (JETTED & STEAM)

DreamLine warrants shower backwalls and shower cabins to be free from defects in workmanship for a period of one (1) year from initial date of purchase by the owner/end-user, contractor or builder from an authorized dealer.

#### SHOWER & TUB DOORS, SHOWER ENCLOSURES

DreamLine warrants shower doors, tub doors and shower enclosures to be free from defects in workmanship and materials under normal residential use for a period of five (5) years from the initial date of purchase by the owner/end-user, contractor or builder from an authorized dealer. Warranty for plastic strips shall be limited to one (1) year. Warranty for any part in Oil Rubbed Bronze finish shall be limited to one (1) year.

#### SHOWER BASES

DreamLine warrants shower bases to be free from defects in workmanship and materials under normal residential use for as long as the original consumer purchaser owns their home in which their product is installed.

#### SHOWER COLUMNS

DreamLine warrants shower columns to be free from defects in workmanship and materials under normal residential use for a period of one (1) year from the initial date of purchase by the owner/end-user, contractor or builder from an authorized dealer.

#### SHOWER SEATS

DreamLine warrants shower seats to be free from defects in workmanship and materials under normal residential use for a period of one (1) year from the initial date of purchase by the owner/end-user, contractor or builder from an authorized dealer. Warranty shall be VOID if the shower seat is not professionally installed on a properly reinforced wall.

#### VANITIES AND VESSEL SINKS

DreamLine warrants bathroom vanities and vessel sinks to be free from defects in workmanship and materials under normal residential use for a period of one (1) year from the initial date of purchase by the owner/end-user, contractor or builder from an authorized dealer.

#### STATE LAWS AND THIS WARRANTY

Some states/provinces do not allow limitations on how long an implied warranty lasts, or the exclusion or limitation of special, incidental or consequential damages, so these limitations and exclusions may not apply to you. This warranty gives you specific legal rights. You may also have other rights, which vary from state/province to state/province.

### WARRANTY SERVICE

The following information will be required for you to file a Warranty claim:

1. Your name, address and telephone number
2. Product model number
3. Brief description of problem (please note that additional information such as photos may be required to fully process your warranty claim)
4. Proof of purchase

You may submit this information by e-mail, mail or fax to:

DreamLine

Warranty Service Center

75 Hawk Road

Warminster, PA 18974

T: 1 - 866 - 731 - 2244

F: 1 - 866 - 857 - 3638

[Warranty@BathAuthority.com](mailto:Warranty@BathAuthority.com)



---

TEL: 866-731-8378

FAX: 866-857-3638

[WWW.BATHAUTHORITY.COM](http://WWW.BATHAUTHORITY.COM)

For more information on [DreamLine™ Shower Doors](#) & [Tub Doors](#) please visit [www.BathAuthority.com](http://www.BathAuthority.com)