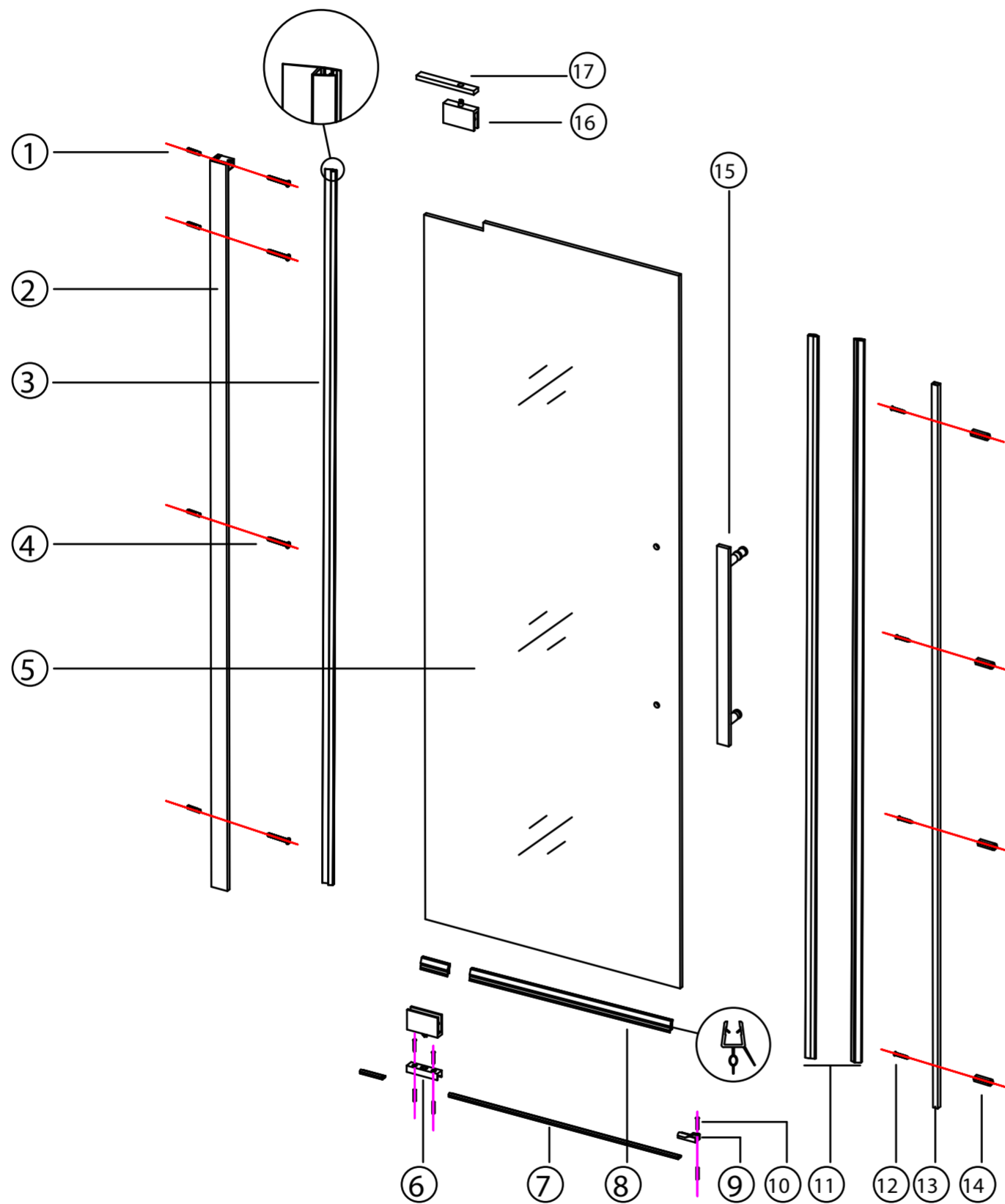




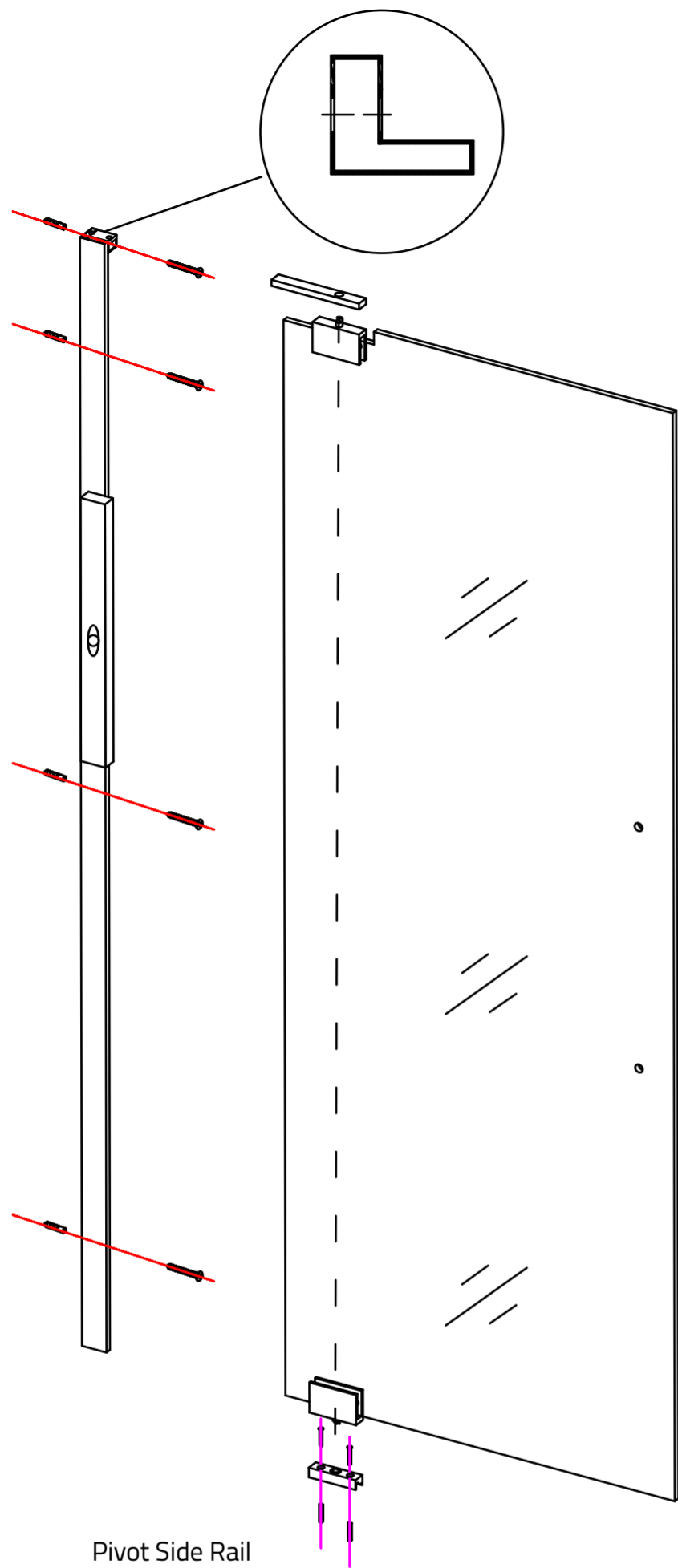
SD-A05 SHOWER PANEL SERIES



Componentlist

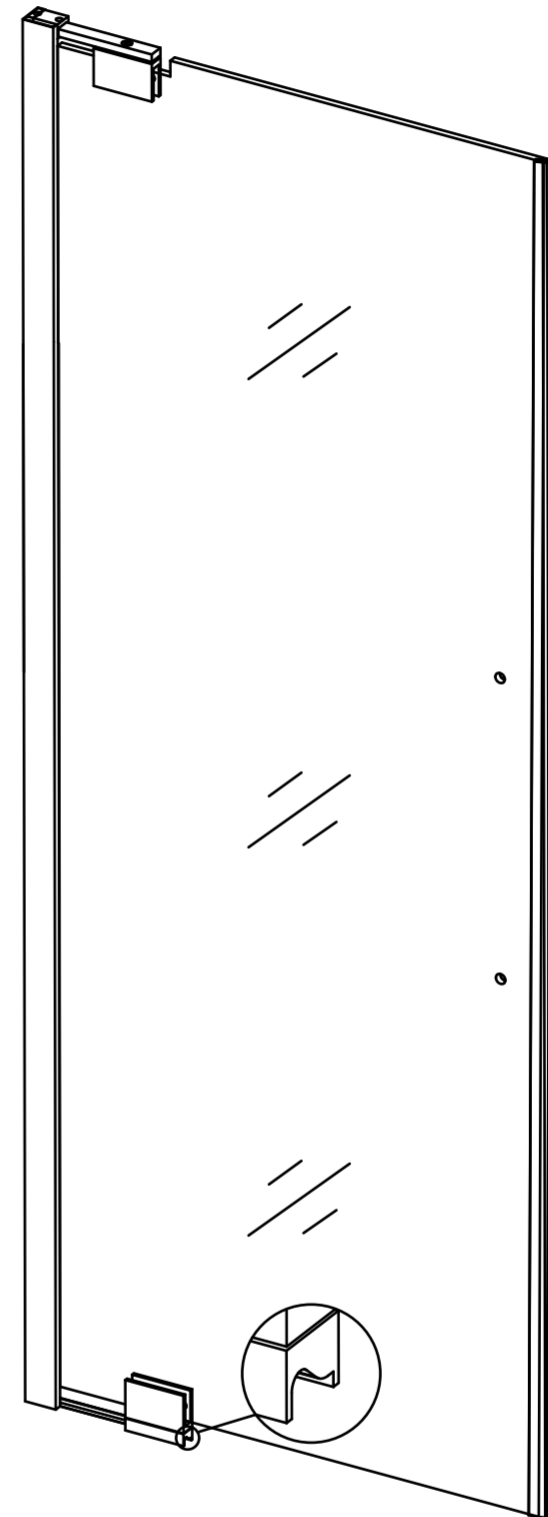
NO.	Description	Drawing	Qty
①	Wall anchor (8)		4
②	Vertical rail		1
③	Door side seal strip		1
④	ST5*40		4
⑤	Moving glass panel		1
⑥	Bottom pivot base		1
⑦	Door threshold		2
⑧	Door bottom seal strip		2
⑨	Threshold clip		1
⑩	ST4*30		3
⑪	Door magnetic seal strip		1
⑫	ST4*30		4
⑬	Vertical rail		1
⑭	Wall anchor (6)		7
⑮	Handle		1
⑯	Pivot		2
⑰	Structural arm		1

NOTE: Unpack your unit carefully and inspect it. Identify all parts using the detailed diagram and packing list in this manual as a reference. Before discarding the carton, check for small hardware bags that may have fallen to the bottom of the box. If any parts are damaged or missing, please contact ANZZI at 1-844-44-ANZZI or support@ANZZI.com.



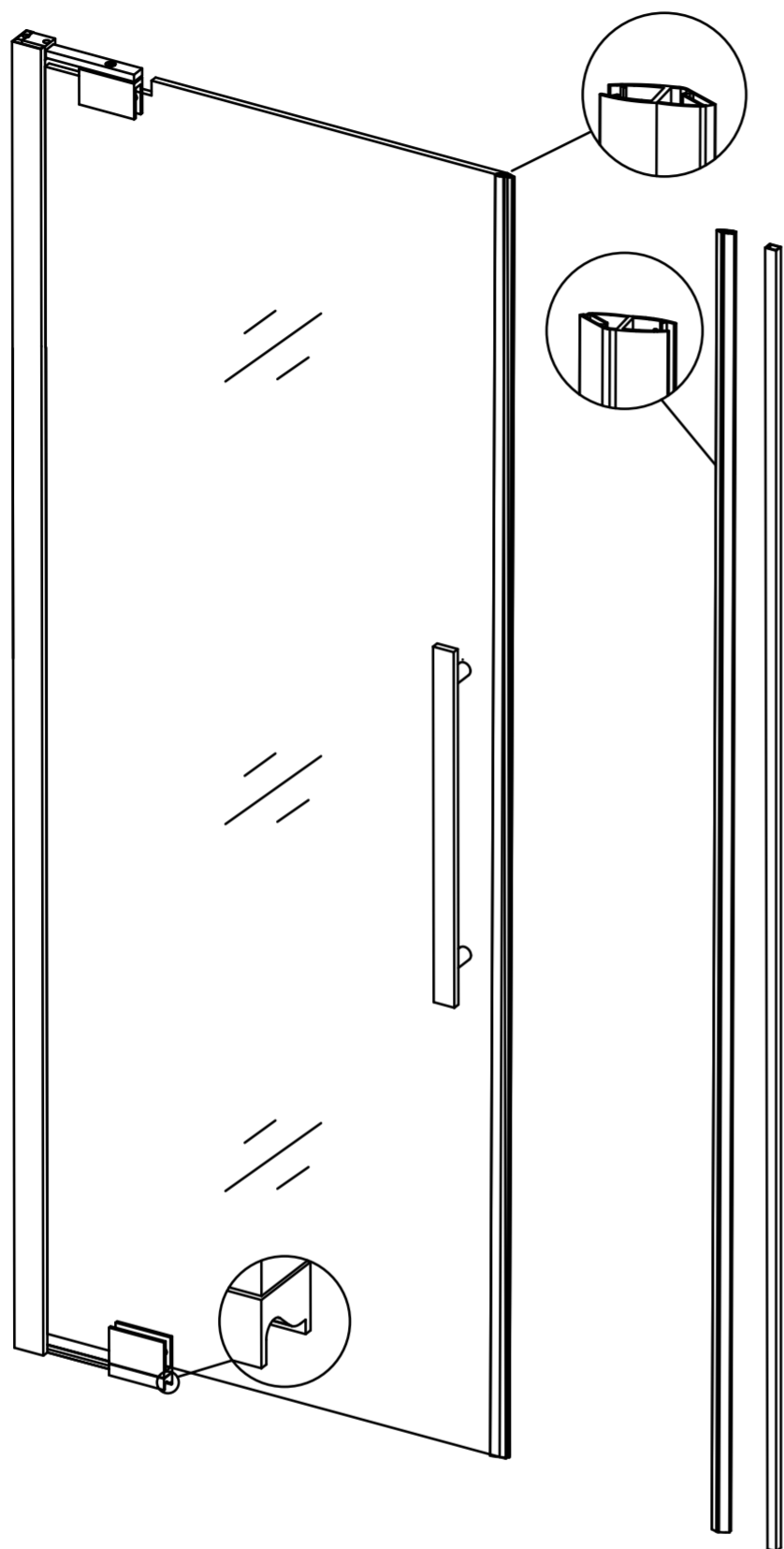
Pivot Side Rail

1. Position the vertical rail (2) along the wall. Make sure it is vertically level and mark where to drill into the wall. Move the rail aside and drill using an 8mm drill bit. Insert the plastic anchors into the wall and realign the guard rail.
2. Finally fix the guard rail to wall using the provided ST5*40 screws (4) screws.
3. Fix the pivot brackets (16) to the top and bottom of the glass panel.



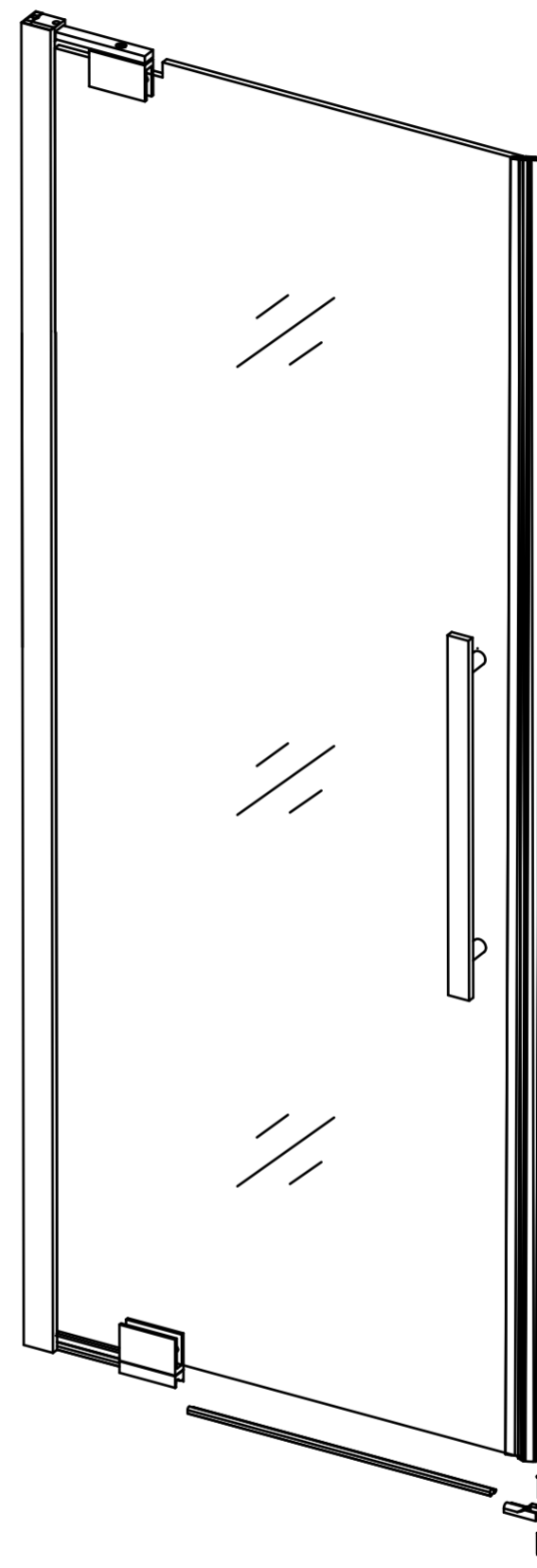
Glass Panel

4. Place the sliding glass panel against the vertical rail and mark where the short threshold strip and the pivot base (6) should be installed.
5. Mark where to drill and use a 6mm drill bit. Insert the short aluminum threshold into the pivot base slot and screw in the pivot base.
6. Place the glass panel on the pivot base and secure the top pivot to the vertical rail using the structural arm (17).



Pivot Base

7. Attached the magnetic seals to each end of the glass panel.
8. Install the long aluminum threshold by inserting it into the pivot base and threshold clip slot. Then install the threshold clip by drilling a 6mm hole and securing it to the floor.
9. Align the thin side profile rail to the opposite wall of the vertical guard rail and mark where to drill. Drill using a 6mm drill bit and insert the anchors. Finally screw in the side profile into the wall.



Finishing

10. Finally, attached a magnetic strip to the side profile rail. And finish by installing the handle to do the glass panel.