

ANZZI™

## Under-mount Sinks Installation Instructions

Stainless Steel

**These instructions are for installing** Under-mount sinks that are installed below the countertop and sealed to the bottom of the counter.


**\* BEFORE INSTALLING THE SINK, INSPECT IT FOR DAMAGE. DO NOT INSTALL A DAMAGED UNIT.**

**CAUTION: Risk of personal injury. Metal surfaces can be sharp and can cause severe cuts. Please use gloves and handle the sink with care.**


Remember, it is your responsibility to follow all local plumbing and building codes.

**The warranty will be voided if these installation instructions are not followed.**


RECOMMENDED TOOLS	
1	Drill and Drill Bit
2	Long Shank Flat Screwdriver
3	Plumbers Putty
4	Pencil
5	Silicone Caulk and Caulk Gun
6	Saber Saw
7	Flashlight
8	Teflon Tape
9	Safety Goggles
10	Gloves
11	Adjustable Wrench




1




2




3



4



5




6



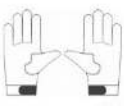
7




8



9



10



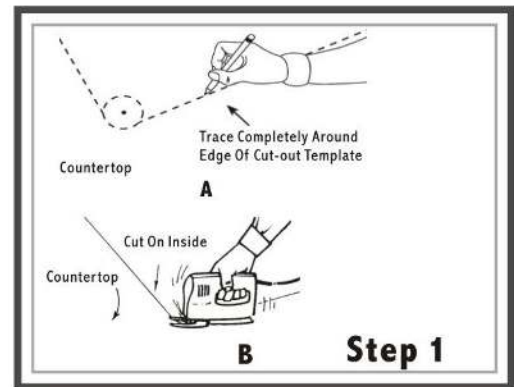
11

For safety and ease of installation, factory recommends the use of the helpful tools above.

## Step 1

(For laminate countertop only, other materials should refer to the countertop manufacture's recommendations.)

- A. Locate template, put masking tape over the area where your sink cut-out will be, this helps avoid splintering of the laminate when you are cutting, trace completely around edge of cut-out template.
- B. It is important that your cut-out be EXACT. Cut sink opening, using the cut-out line as your guide. Brace up the cut-out portion as you complete cutting to avoid splintering the edge of hole. Sand edges smooth.

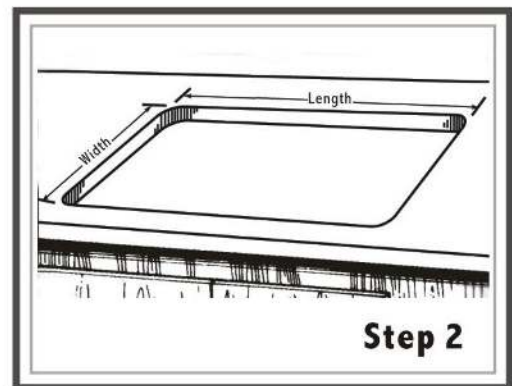


### NOTE :

Paper and cardboard templates are supplied only as a guide. Using the actual sink ensures a more accurate cut-out. Mark the centerpoint of the sink on the template.

## Step 2 (Check Your Dimensions)

Check the countertop cut-out opening by placing the sink in the opening to be sure it is sized properly. The sink rim must be set uniformly on the countertop, ensure the corners of the sink sit properly. If the sink does not fit, enlarge the cut-out opening with a saber saw.

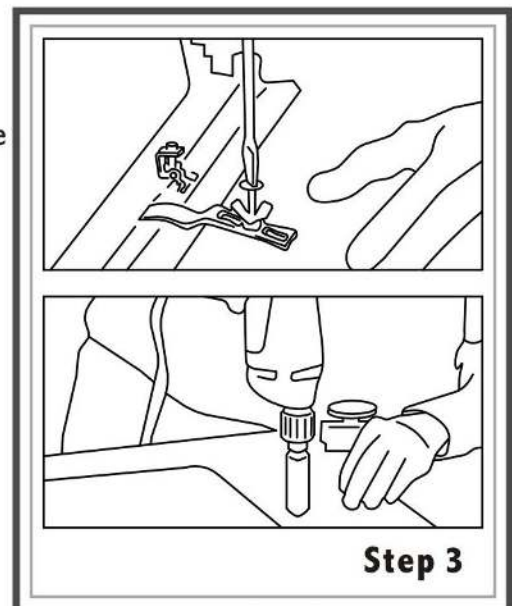


## Step 3 (Attach the Undermount Clips )

Position bowl so that reveal is equidistant. Then on underside of countertop, drill holes for brass inserts of undermount clips. Use a drill bit with stop block to avoid drilling through the top. For 1/2" countertop material, drill 3/8" deep holes. Use three clips on the long sides of the sink, and two clips on the short sides of the sink, or follow the locations on the template that comes with the sink. Drill the holes 1" back from the cut-out edge.

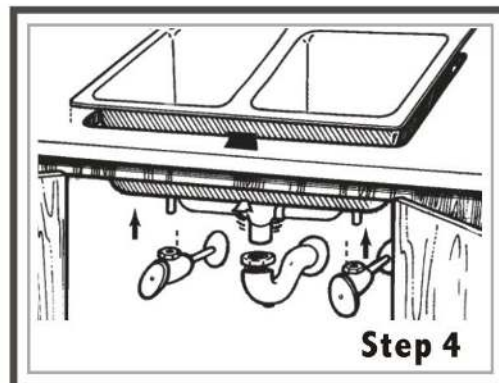
### NOTE :

The clip may be too long for some installations. If this is the case, make a brace out of wood or solid surfacing, butt it up against the sink, and on site, screw it into the cabinet wall. Measure the thickness of the brace and the cabinet wall so the screw does not go though to the other side of the cabinet. Instructions continued on back panel.



## Step 4 (Install the Sink)

Clean the bottom of the countertop and the top flange (or lip) of the sink with denatured alcohol. Then apply a bead of silicone adhesive sealant to the top edge of the bowl flange and position the bowl in the countertop. The easiest way to handle the sink is via the drain hole or holes, especially if it's a double bowl model.

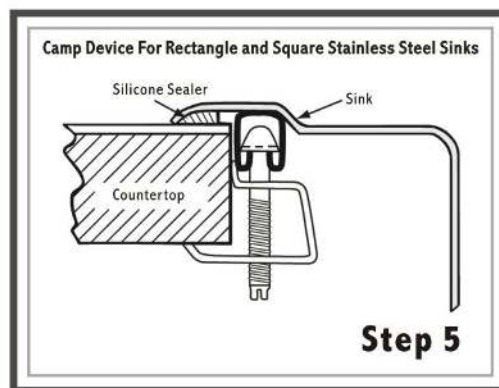


## Step 5 (Tighten the Clips)

Tap in the brass inserts (anchors) for clips into the pre-drilled holes with the slotted ends first. Thread a wing nut onto a screw, up near the head. With washer and slotted clip in place. Tighten the screws to anchor the brass clip into the countertop material. Repeat for each clip. Hand-tighten the wing nut to secure the sink bowl.

### NOTE :

Do not fully tighten one clip at a time. Partially tighten a clip, then partially tighten the clip across from it. After each clip is partially tightened, repeat the process, fully tightening each clip. This ensures a secure installation and avoids damage to the sink.



## **Stainless Steel Sink Care:**

### **After Each Use:**

- Remove all objects, pads, grids, cloths, etc., from sink.
- Clean with light soap solution, rinse, drain all water and towel dry.

### **Regular Maintenance:**

Side Walls and Bottom of Sink: Remove stains using a cleaning product that contains mild abrasives; always wipe in grain direction; rinse well and towel dry. For stubborn stains or scratches use a fine grit scrubbing pad following direction of sink grain finish. Pay careful attention to the directional change.

**Mineral Deposits:** Use a cleaning product that contains mild abrasives or a light solution of vinegar and water (1:20 ratio); rinse well and towel dry.

**CAUTION:** Stainless steel requires exposure to air; DO NOT leave items, objects, cloths, mats, water, pots and pans, cast iron, knives, etc., in sink when not washing. Some items void stainless steel from oxygen and can cause pitting or rusting.

### **DO NOT :**

- Use steel wool or other metal or coarse scouring pads.
- Stand on or in sink when cleaning windows, reaching for top shelf, painting, etc.
- Drop heavy objects in sink as this will cause denting.
- Leave water, bleach, other cleaners, or chemicals of any type in sink; always rinse sink after any use and dry with towel.
- Use concentrated bleach; always dilute with water and rinse thoroughly after use.
- Use any acids, drain cleaners, harsh chemicals, paint removers, metal cleaners, etc., in sink.
- Drop sharp objects in sink or use as a cutting surface.

## **Lifetime Limited Warranty**

The manufacturer warrants that the parts and assemblies of this product will be free from defects in material and workmanship under normal household use for as long as it is owned by the original consumer purchaser.

This warranty covers the original consumer purchaser only and does not include business, commercial or industrial use of this product. This warranty shall not apply to goods which have been subject to accidents, negligence or improper installation. Our responsibility under this warranty is limited only to the replacement of parts and no other costs. Should a malfunction occur within the time covered by this warranty, replacement parts may be obtained from Customer Service Department 1-844-44-ANZZI . The manufacturer will, at its discretion, provide replacement parts for installation by consumer for any parts that prove defective under normal usage and service with new and like or equivalent parts.