

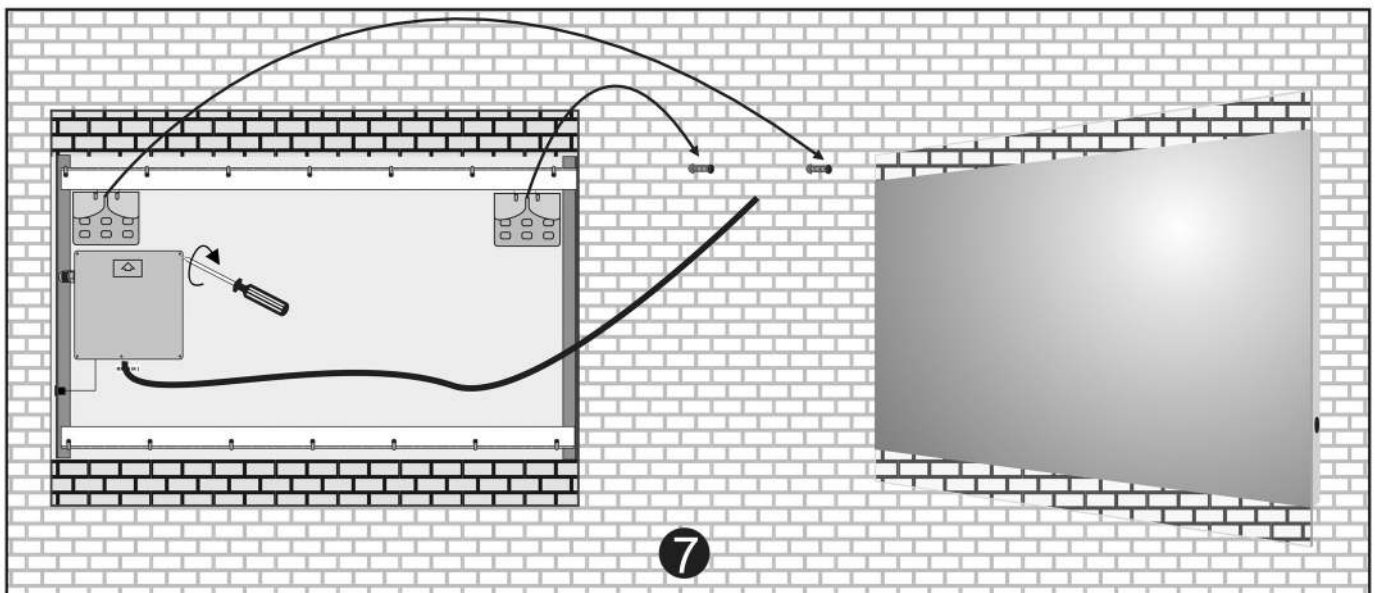
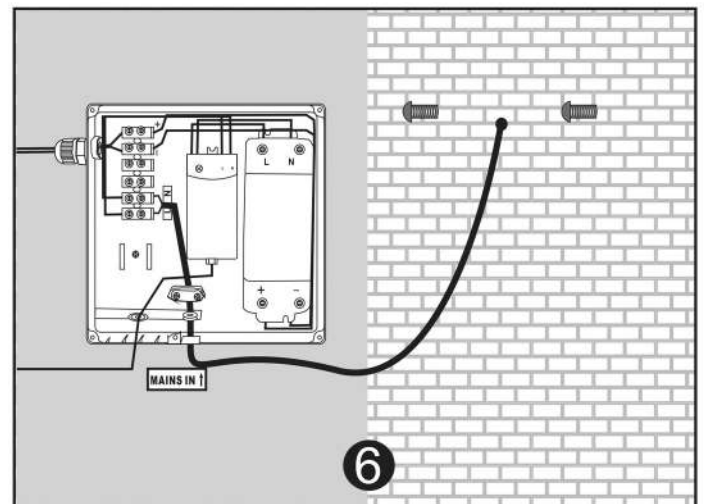
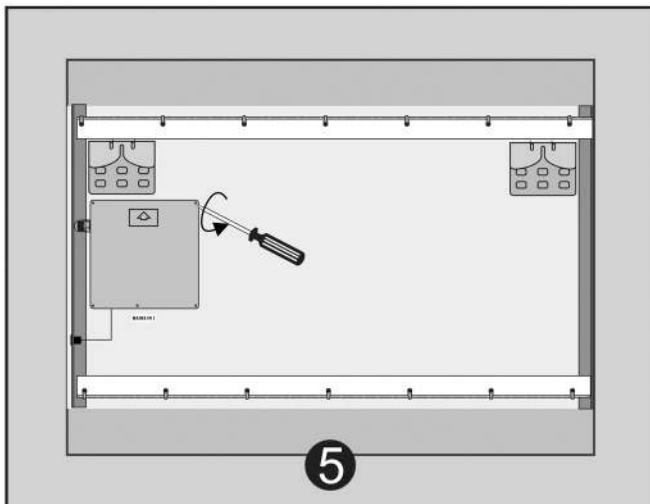
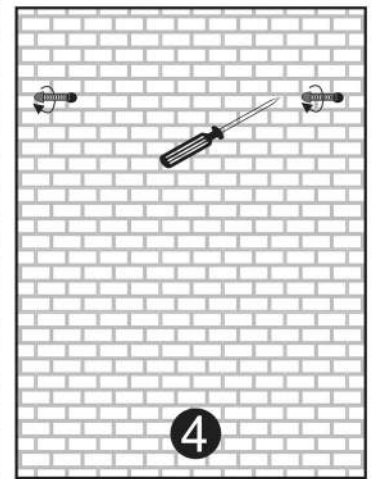
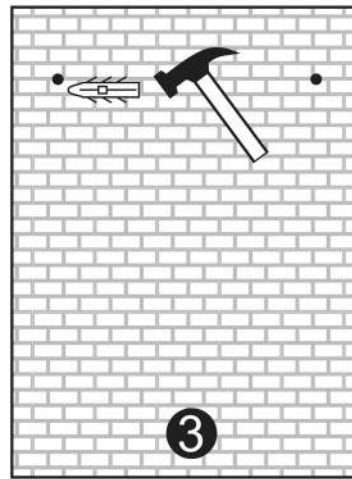
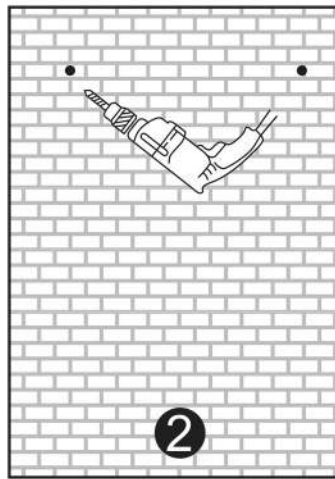
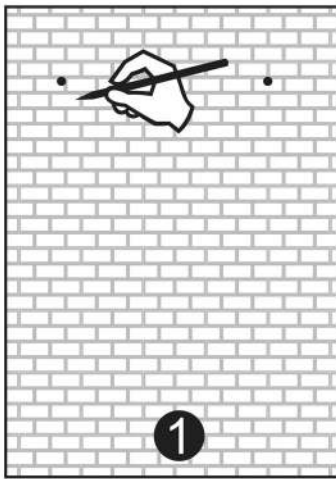
# Dawn®

## Kitchen & Bath Products, Inc.

### DLEDL36 Installation Instructions

LED Back Light Mirror (IR Sensor)  
Matte Aluminum Frame  
31-1/2" x 1-3/16" x 23-5/8"

27688 Industrial Blvd., Hayward, CA 94545 • Toll-Free: 877-329-6872 • Fax: 510-723-0099 • dp@dawnusa.net • www.dawnusa.net



IMPORTANT: Recommended for professional installers only. The installer maintains responsibility for installing the product safely and correctly.

CE IP44

©2018 Dawn Kitchen & Bath Products, Inc. All Rights Reserved.