

48" CAST IRON ROLL TOP TUB

Cat. No.
CTRN49



L: 48"
W: 30"
H: 20 1/2" (from floor to top of tub)

Depth: 12" to overflow
14 1/2" at drain

Overflow hole: 1 1/2" diameter

The following is recommended for CTRN49 tubs without faucet holes:

- Faucets: part #4602, 7393 or 7410
- Rigid, freestanding supplies: Part #4502
- Leg tub drain: part #5599

Gallon Capacity: 29
Shipping Weight: 413 lbs.
Empty Weight: 233 lbs.
Filled Weight: 484 lbs.

Features:

- ▶ Inside finish is white enamel
- ▶ Ball and claw feet available in 6 finishes
- ▶ Tub exterior is enamel
- ▶ No faucet holes
- ▶ Feet are attached and leveled before shipment
- ▶ Tub is thoroughly inspected before shipment

Foot Finishes:

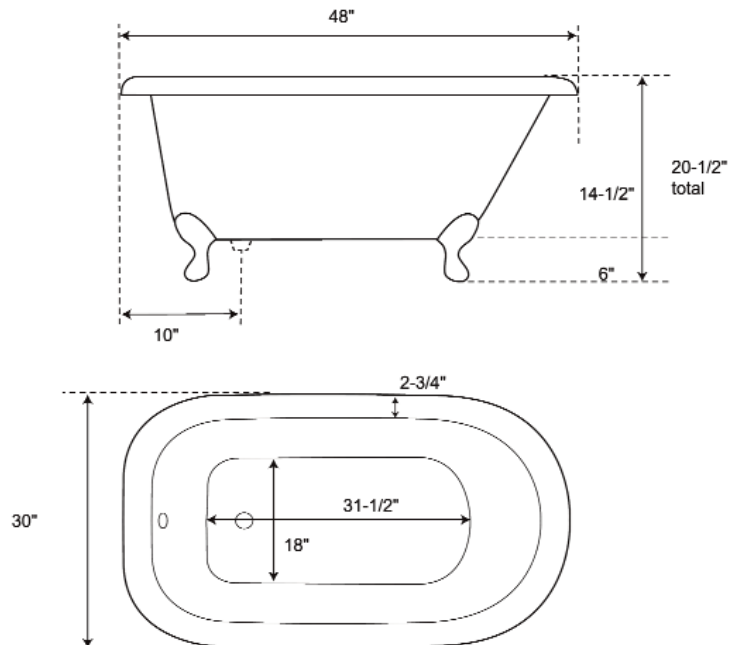
BP Polished Brass **SN** Brushed Nickel
CP Polished Chrome **ORB** Oil-Rubbed Bronze
PN Polished Nickel **WH** White

Extra Paint Charge (inside of tub is always white enamel):

Bisque Paint - \$160

Black Paint - \$160

Bathtubs painted in bisque or black are considered "special order" and are not returnable.



Dimensions of fixture are nominal and may vary within the range of tolerances established by ANSI Standard A112.19.2. Dimensions and specifications subject to change without notice.