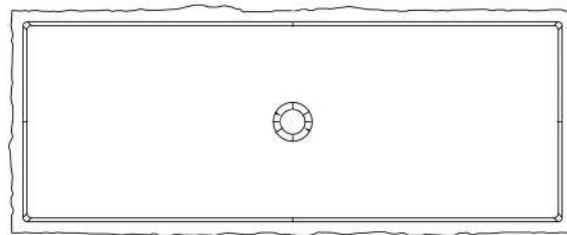


# Installation Instructions

## Concrete Above Amount Sink

### ABC039TR



#### BEFORE YOU BEGIN

- Observe all local plumbing and building codes.
- Inspect the waste and supply tubing, replace if necessary.
- Prior to installation, unpack the new lavatory and carefully inspect it for damage. Return the lavatory to its protective carton until you are ready to install it.
- For replacement installations, make sure the existing cutout is the same or smaller size as the new lavatory.

#### TOOLS AND MATERIALS (Not Supplied)

- Safety Glasses
- Pencil
- Scissors
- Tape Measure
- Putty Knife
- Plumbers putty
- Hacksaw
- Keyhole Saw or Saber Saw
- Drill (13mm or 1/2" dia. drill bit or larger)
- Adjustable Wrench
- Pipe wrench
- Tubing Cutter

#### INSTALL NEW LAVATORY

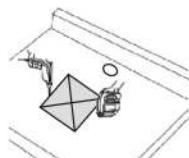
Note: Please take faucet dimension into account. If the lavatory installation position is too close to the wall, the drain lift rod might experience difficulty in fixing and using.

- Trace the template with a pencil (B) to map the outer rim of the lavatory onto the countertop.
- Drill a  $\phi$  13mm hole on the inside of the cutout opening.
- Cut the opening in the countertop along the inside edge of the pencil line.
- Drill the faucet installation hole according to faucet and countertop dimension.



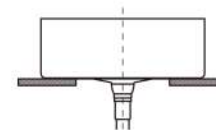
Note: The faucet installation hole shall be precisely drilled, otherwise, it may affect faucet performance in the future use.

- Temporarily position the lavatory in the opening, and adjust to fit.



- ⚠ **CAUTION: Risk of personal injury or product damage.** Large lavatories are very heavy. Get help lifting the lavatory into place.

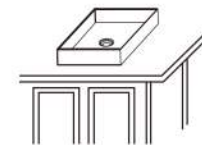
- Remove the lavatory. Install the faucet and drain according to the manufacturers instructions.



- Apply sealant to the bottom installation area.
- Carefully position the lavatory in the cutout, and press down firmly.

⚠ **CAUTION: Risk of personal injury or product damage.** Large lavatories are very heavy. Get help lifting the lavatory into place.

- Immediately wipe away any excess sealant, and fill any voids as needed.
- Verify that the lavatory has not moved out of position.
- Allow the sealant to cure for at least 30 minutes before proceeding.
- Connect the faucet supply lines.
- Connect the drain assembly.
- Open the faucet valves, and check for leakage.
- Clean up with a non-abrasive cleaner.



Note 1: It is prohibited to use epoxy resin as the sealant.

Note 2: Faucet needs to be tightly connected with inlet and outlet supplies. Otherwise, it may lead to leakage.

#### CARE AND MAINTENANCE

To enable you to use the washbasin safely and hygienically, please follow the instructions below to clean and maintain the washbasin.

- It is recommended to wash the basin frequently.
- Please clean only use warm soapy water and then dry with a soft cloth.
- Do not use wire brushes, detergents, abrasives and other supplies to clean, to prevent abrasion on the surface of the basin.
- Do not use hard or sharp objects to scratch the surface of the basin.
- Pay attention to avoid collision.
- It is recommended to use wax to maintain the washbasin every six months.