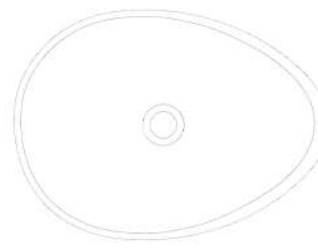


Installation Instructions

Concrete Above Amount Sink

ABCO21O



BEFORE YOU BEGIN

- Observe all local plumbing and building codes.
- Inspect the waste and supply tubing, replace if necessary.
- Prior to installation, unpack the new lavatory and carefully inspect it for damage. Return the lavatory to its protective carton until you are ready to install it.
- For replacement installations, make sure the existing cutout is the same or smaller size as the new lavatory.

TOOLS AND MATERIALS (Not Supplied)

- Safety Glasses
- Pencil
- Scissors
- Tape Measure
- Putty Knife
- Plumbers putty
- Hacksaw
- Keyhole Saw or Saber Saw
- Drill (13mm or 1/2" dia. drill bit or larger)
- Adjustable Wrench
- Pipe wrench
- Tubing Cutter

INSTALL NEW LAVATORY

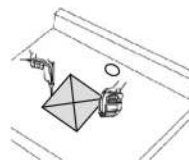
Note: Please take faucet dimension into account. If the lavatory installation position is too close to the wall, the drain lift rod might experience difficulty in fixing and using.

- Trace the template with a pencil (B) to map the outer rim of the lavatory onto the countertop.
- Drill a ϕ 13mm hole on the inside of the cutout opening.
- Cut the opening in the countertop along the inside edge of the pencil line.
- Drill the faucet installation hole according to faucet and countertop dimension.



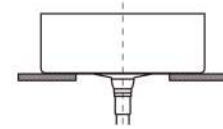
Note: The faucet installation hole shall be precisely drilled, otherwise, it may affect faucet performance in the future use.

- Temporarily position the lavatory in the opening, and adjust to fit.



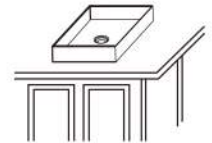
- ⚠ **CAUTION: Risk of personal injury or product damage.** Large lavatories are very heavy. Get help lifting the lavatory into place.

- Remove the lavatory. Install the faucet and drain according to the manufacturers instructions.
- Apply sealant to the bottom installation area.
- Carefully position the lavatory in the cutout, and press down firmly.



- ⚠ **CAUTION: Risk of personal injury or product damage.** Large lavatories are very heavy. Get help lifting the lavatory into place.

- Immediately wipe away any excess sealant, and fill any voids as needed.
- Verify that the lavatory has not moved out of position.
- Allow the sealant to cure for at least 30 minutes before proceeding.
- Connect the faucet supply lines.
- Connect the drain assembly.
- Open the faucet valves, and check for leakage.
- Clean up with a non-abrasive cleaner.



Note 1: It is prohibited to use epoxy resin as the sealant.

Note 2: Faucet needs to be tightly connected with inlet and outlet supplies. Otherwise, it may lead to leakage.

CARE AND MAINTENANCE

To enable you to use the washbasin safely and hygienically, please follow the instructions below to clean and maintain the washbasin.

- It is recommended to wash the basin frequently.
- Please clean only use warm soapy water and then dry with a soft cloth.
- Do not use wire brushes, detergents, abrasives and other supplies to clean, to prevent abrasion on the surface of the basin.
- Do not use hard or sharp objects to scratch the surface of the basin.
- Pay attention to avoid collision.
- It is recommended to use wax to maintain the washbasin every six months.