

10 YEAR MANUFACTURER'S

LIMITED WARRANTY

All parts of this Kingston Brass faucet are warranted to the original retail purchaser to be free from defects in material and workmanship for a period of Ten(10) years from the date of purchase as shown on the purchaser's receipt.

This warranty is limited to defective parts only, labor charges and/or damage resulting from improper installation, repair or replacements, as well as incidental and consequential damages connected therewith are excluded.

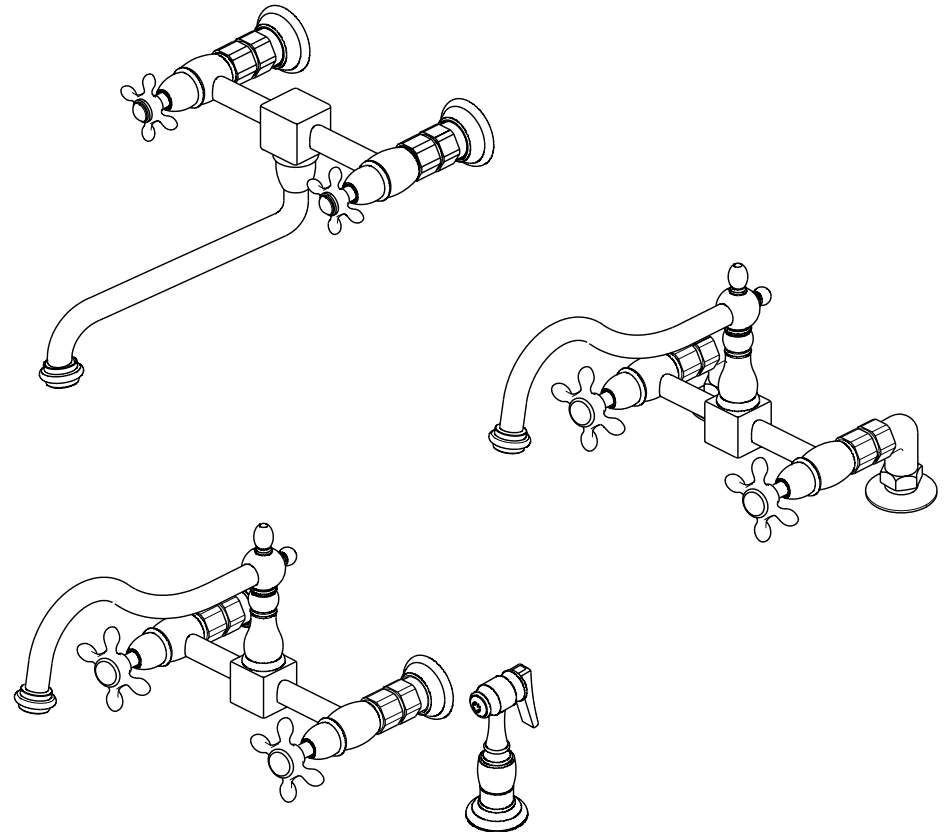
Any damage to this faucet as a result of misuse, abuse, neglect, accident, or improper installation or any use not consistent with the instructions furnished by us, will void this warranty.

Replacement parts can be obtained from your local dealer. Freight cost is not covered by Manufacture.

CAUTION!!!

1. Water lines must be completely flushed before use, to avoid debris & clogs in your water system leading to mal-function and reduction of water flow.
2. Warranty to be void if water lines are not flushed before use of new faucet.
3. Use of abrasives of any strength may damage the finish of your faucet and void this warranty.

CODE APPROVAL: LA#M-000018



www.kingstonbrass.com

TOLL-FREE CUSTOMER SERVICE: 877-2-KBRASS

TECHNICAL SUPPORT E-mail: service@kingstonbrass.com

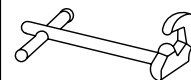
6240 Prescott Court, Chino, CA91710

INSTALLATION INSTRUCTIONS

For Use With KB's Kitchen Faucets With or Without Sprayer

NOTE:

1. FLUSH LINE BEFORE FAUCET INSTALLATION TO REMOVE DEBRIS IN LINES.
2. NO PLUMBER'S PUTTY ON ANY FINISH TO CORRODE FINISH OF FAUCET SURFACE.



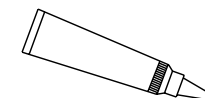
Basin Wrench



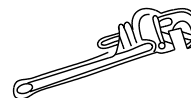
Adjustable Wrench



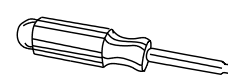
Telfon's Tape



Silicone Sealant



Pipe Wrench



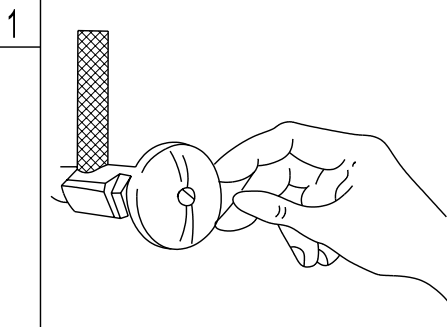
Screwdriver



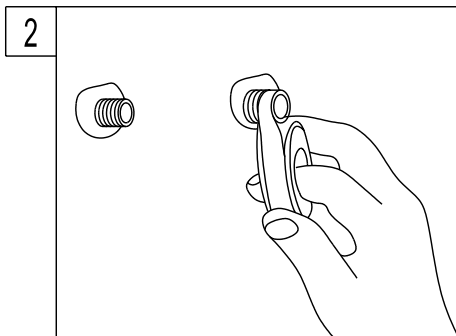
Flexible Water Supply Line



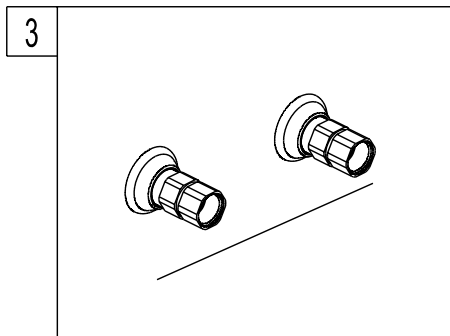
Plumber's Putty



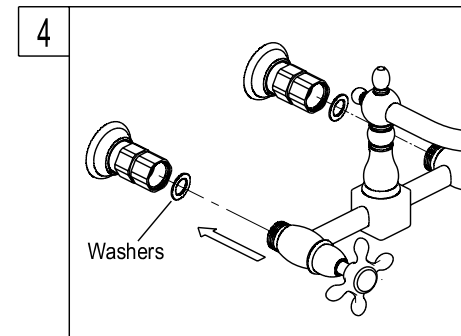
1. Locate water supply and shut off the water.



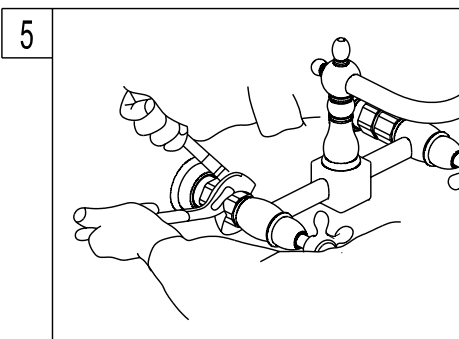
2. Turn on old faucet to remove any excess water in the supply lines. Remove old faucet. Apply Teflon tape onto both threads of supply elbows.



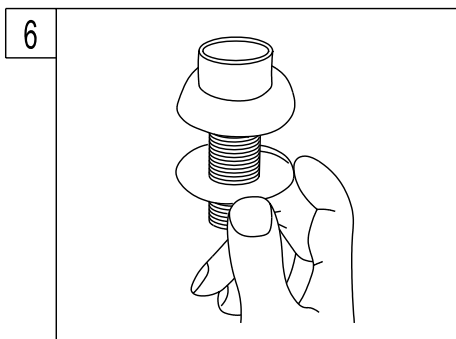
3. Mount the large black washers into back side of wall washers. mount the wall flanges through supply elbows onto the wall , secure and sealed by silicon sealant.



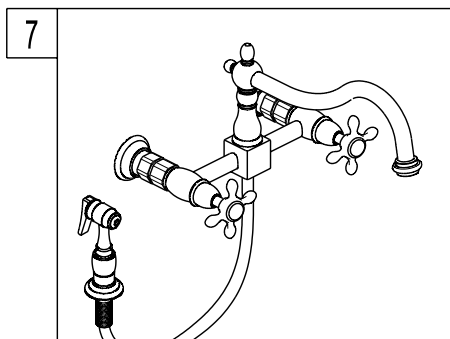
4. Align the elbows to mount the faucet. Before mounting the faucet onto supply elbows ,please apply small black washers onto both water inlets of faucets. Align the elbows to mount the faucet.



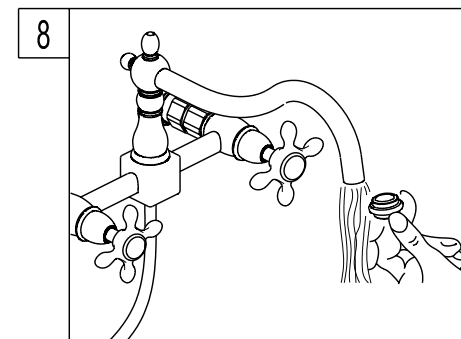
5. Tight up faucet onto supply elbows with an adjustable wrench. Align the elbows to mount the faucet.



6. For model is with spray head and hose. Place the spray guide through the fourth hold in the sink, screw the locknut onto the shank and tighten firmly.



7. Insert the hose through the guide and attach to the fitting on the bottom of the faucet. Attach spray head to the hose.



8. Turn on water supply and check for leaks. Remove the aerator from spout and allow both hot and cold water to run for one minute. Replace aerator.